

### WEEKLY UPDATE WITH PHOTOS For week commencing 24<sup>th</sup> June 2024

- Core A and B brickwork is complete with brickwork cleaning down to the First floor.
- The communal walls have been closed from the First to Eighth floor with the Ground floor still in progress.
- Carpet has been fitted in the benchmark flats and the snagging process is now being implemented.
- Tape and Jointing is now completed on the Eighth floor.
- Mist coating is complete from the First to Eighth Floor.
- Decoration has started to the first seven plots on the First Floor.
- Hard flooring commenced with floor latex works in progress.
- Staircase boarding is complete to both core A and B and mist coated.
- The plant room works are nearing completion.
- The balcony balustrades have started on site, Core B is nearing completion.
- Electrical second fix is complete from the First to Eighth floor with the ground floor in progress.
- Mechanical second fix is complete from the First to Eighth floor and ground floor in progress.
- Carpentry second fix is complete from the First to Eighth floor and communal and staircase door are being fitted
- Kitchen installation is complete to the Eighth floor with the ground floor waiting to start.



**Tony Johnson**  
Senior Site Manager

#### Contact our Social Value and Community Team

☎ 0800 032 6760 (free phone) 8am to 8pm, seven days a week

✉ residents@hill.co.uk

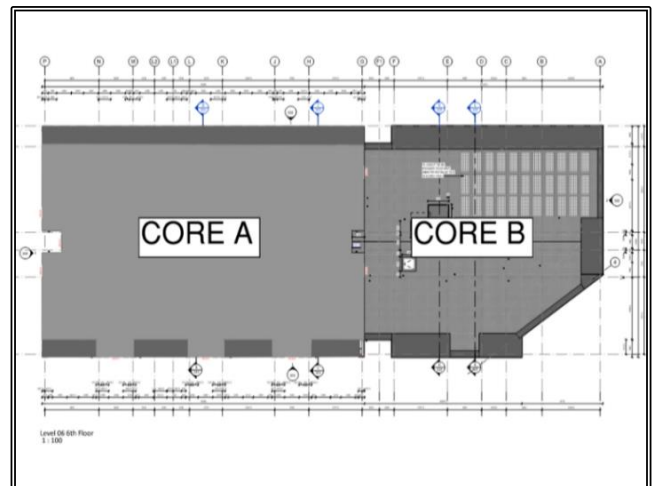
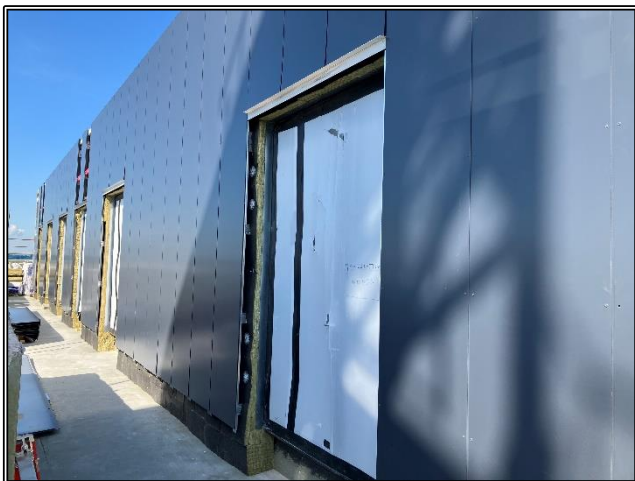
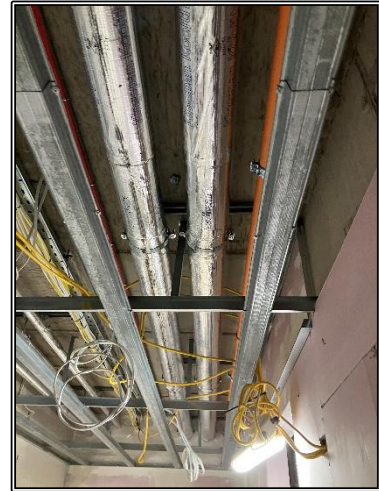
✍ The Powder House  
Gunpowder Mill  
Powdermill Lane  
Waltham Abbey  
Essex, EN9 1BN



# Thamesview House Bulletin

## 21<sup>st</sup> June 2024

- Both lifts have now been installed.
- Tiling to kitchens and bathrooms is complete from First to Seventh.
- Roof light to Core A has been installed, awaiting delivery for Core B.
- Balcony tiling has been loaded out in readiness to progress.
- The site will be open on Saturday 22/06/2024.



**Tony Johnson**  
Senior Site Manager

### Contact our Social Value and Community Team

☎ 0800 032 6760 (free phone) 8am to 8pm, seven days a week

✉ residents@hill.co.uk

✍ The Powder House  
Gunpowder Mill  
Powdermill Lane  
Waltham Abbey  
Essex, EN9 1BN

