

---

## WEEKLY UPDATE WITH PHOTOS

### For week commencing 12 December 2022

- The demolition of the Thames View House building has continued this past week, with Zone 5 completed up to the staircore.
- We have realigned the fencing to Franklyn Road and arranged waste skips as a safety precaution. This section of the road will remain closed as a safety precaution and will be reopened once deemed safe to do so.
- We have begun removing the cladding to the façade of the building in preparation for the demolition of the remaining 3 zones and the staircore.
- We are aiming to begin the demolition of Zone 8 on Monday. This will involve the use of a mobile crane to hang a screen on the corner of the building to aid in the containment of the debris.
- We will continue processing the demolished material on-site.
- A dust monitoring system is being monitored daily to ensure that the dust created is below the allowable amount.
- Noise monitoring will be carried out regularly.
- We will continue emphasising the need to adhere to the transport management plan with all involved.
- We will continue to clean the surrounding areas regularly to ensure minimal impact on our neighbours. Should it be deemed too windy, the demolition works will be halted.



Chris Pedersen  
Site Manager

---

### Contact our Social Value and Community Team

☎ 0800 032 6760 (free phone) 8am to 8pm, seven days a week

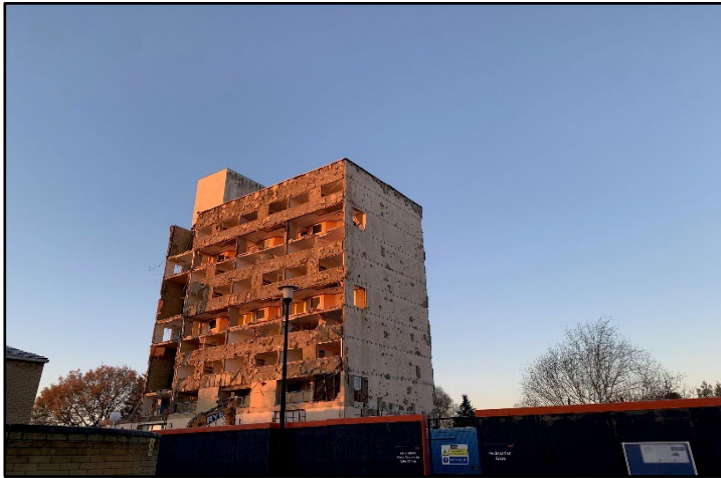
✉ residents@hill.co.uk

✍ The Power House  
Gunpowder Mill  
Powdermill Lane  
Waltham Abbey  
Essex, EN9 1BN



# Thamesview House Bulletin

09 December 2022



*Zone 5 Complete*



*Cladding Removed to Remaining Structure*



*Red Zones Complete, Green Zones Yet to Be Done*



**Chris Pedersen**  
Site Manager

## Contact our Social Value and Community Team

☎ 0800 032 6760 (free phone) 8am to 8pm, seven days a week

✉ residents@hill.co.uk

📍 The Power House  
Gunpowder Mill  
Powdermill Lane  
Waltham Abbey  
Essex, EN9 1BN

