

WEEKLY UPDATE WITH PHOTOS For week commencing 22nd May

- The ground floor slab is now complete.
- We have completed the ground to first floor concrete columns for both Block A and B.
- External work will continue with a reduced level dig, creating a new formation level and the installation of drainage.
- Block A 1st floor slab is now complete and 1st to 2nd floor columns are now in progress.
- Block B 1st floor decking is in progress and the slab is due to be poured in the week following the rebar fixing.
- The services to our new site offices have been installed, and we have begun using these facilities. Footpaths and walkways are in progress.
- We will continue emphasising the need to adhere to the transport management plan. We now have an agreement to change the traffic management plan meaning the vehicles will, as of Monday the 3rd of April, access the site by Russell Road and exit the site via Sunbury Road. All sub-contractors have been sent the new plan and the gate man also has a copy displayed at the site entrance.
- We have continued grubbing up the tarmac to the existing Thamesview House car park to allow us to continue with the external works.
- **The next resident's drop-in session will be on Wednesday 14, June 1:00pm – 4:00pm at the Scouts Hut, Felix Rd, KT12 2SN.**



Chris Pedersen
Site Manager

Contact our Social Value and Community Team

☎ 0800 032 6760 (free phone) 8am to 8pm, seven days a week

✉ residents@hill.co.uk

✍ The Powder House
Gunpowder Mill
Powdermill Lane
Waltham Abbey
Essex, EN9 1BN



Thamesview House Bulletin

19th May 2023



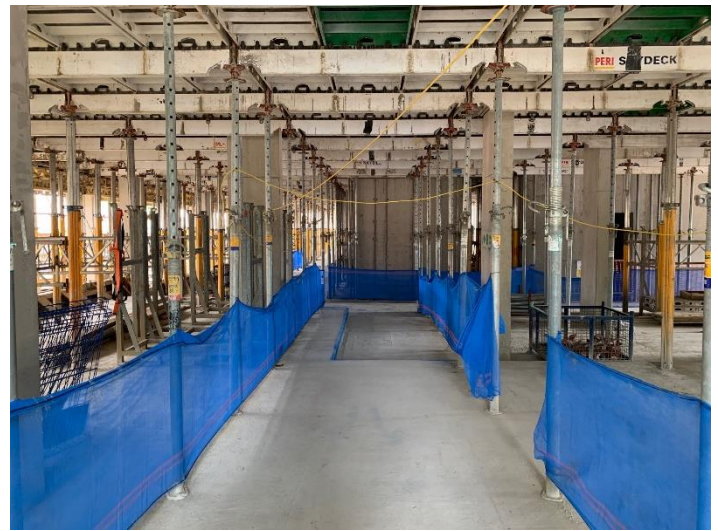
Overview of Site Compound



Overview of First Floor Core A



Overview of First Floor Core B




Ground Floor Slab




Chris Pedersen
Site Manager

Contact our Social Value and Community Team

 0800 032 6760 (free phone) 8am to 8pm, seven days a week

 residents@hill.co.uk

 The Powder House
Gunpowder Mill
Powdermill Lane
Waltham Abbey
Essex, EN9 1BN

