

## WEEKLY UPDATE WITH PHOTOS

### For week commencing 6<sup>th</sup> November 2023

- The scaffolding to the seventh floor has now been completed and progressing to the eighth floor. Sixth and seventh floors loading bay are now complete and they are currently carrying out adaptations for the lower levels.
- Steel frame to the external walls has been completed to the seventh and eighth floors and are now boarded.
- The window installation from ground to sixth floors have been complete and the remaining windows are now on site and will be fitted this week.
- Ground to fifth floor party walls are now complete with the sixth floor in progress.
- Screeding from first to third floor is now complete with fourth floor due this week.
- We have completed the blockwork to the mechanical and electrical risers.
- The external brickwork has continued this week with the ground floor to first floor completed and first and second floor is in progress and inset balcony progressing up the building.
- Ventilation flat ducting to all levels is now complete.
- We will continue the heating and water distribution pipework installation.
- We have commenced the internal insulation to the external walls and first fix studwork is in progress on the upper floors.
- Electrical wiring is progressing on site and containment to the communal areas is in progress.
- The site will be open on Saturday 04/11/2023 between 8am and 1pm.



**Tony Johnson**  
Senior Site Manager

### Contact our Social Value and Community Team

☎ 0800 032 6760 (free phone) 8am to 8pm, seven days a week

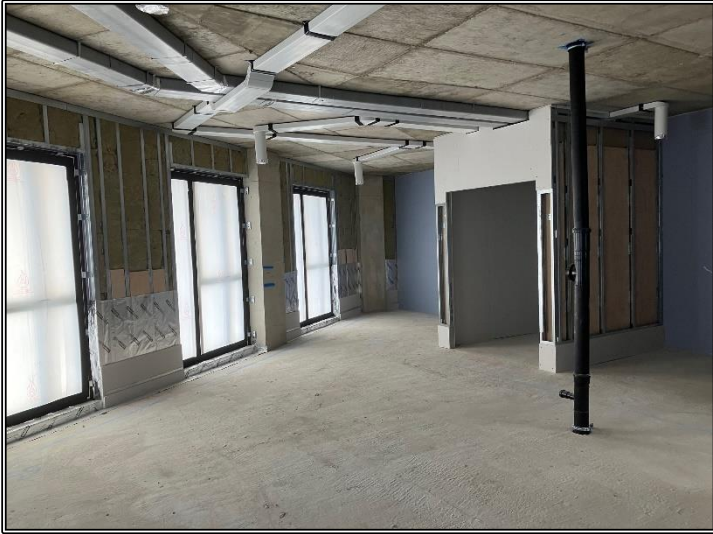
✉ residents@hill.co.uk

✍ The Powder House  
Gunpowder Mill  
Powdermill Lane  
Waltham Abbey  
Essex, EN9 1BN



# Thamesview House Bulletin

## 6<sup>th</sup> November 2023



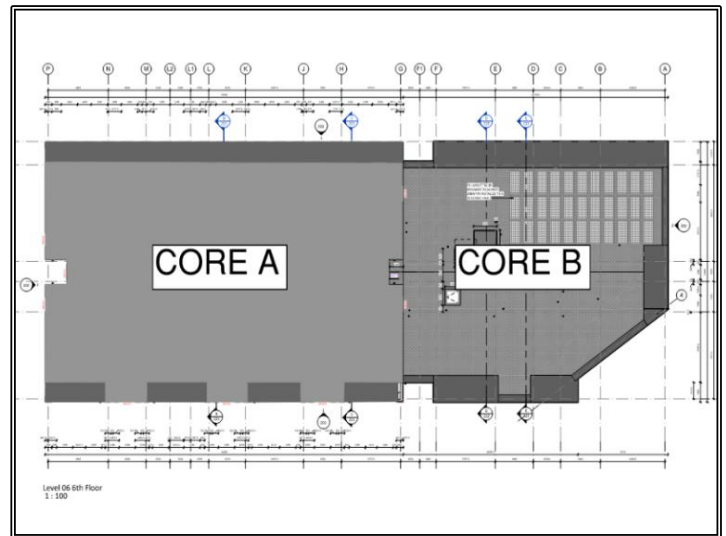
5<sup>th</sup> Floor Party Walls



1<sup>st</sup> Floor Mechanical First Fix



3<sup>rd</sup> Floor Screed Installation



Core Identification



**Tony Johnson**  
Senior Site Manager

### Contact our Social Value and Community Team

☎ 0800 032 6760 (free phone) 8am to 8pm, seven days a week

✉ residents@hill.co.uk

📍 The Powder House  
Gunpowder Mill  
Powdermill Lane  
Waltham Abbey  
Essex, EN9 1BN

