

ODYSSEY

— SOUTH CROYDON —

SQUARE

— ODYSSEY SQUARE —
HOME IS WHERE EVERY
CORNER HOLDS AN
ADVENTURE

MIGHTY DEVELOPMENT

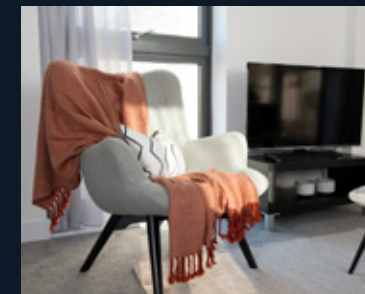
Introducing 66 stylish Shared Ownership apartments in South Croydon, offering a wide range of 1, 2 and 3 beds. Enjoy the beauty of a courtyard within a vibrant community. Ideal for singles, couples, and families.



Computer generated imagery

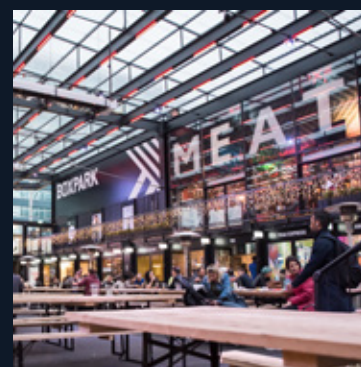


Computer generated imagery



FALL IN LOVE WITH THE AREA

South Croydon in Greater London offers a unique blend of history, culture and modern convenience. With its rich heritage, diverse shopping scene, and iconic landmarks, South Croydon captivates residents and visitors alike, making it a sought-after destination in which to live, work and explore.



Croydon is home to one of the most iconic landmarks in the country, Shirley Windmill which is a testament to the area's agricultural past. For those seeking retail therapy, it boasts a diverse array of shops and boutiques, from high-street brands to the independent retailers. For nature enthusiasts, it offers an abundance of green spaces. Take a leisurely stroll through Queens Garden or enjoy a picnic in one of the many leafy parks scattered throughout the area.





WITHIN REACH

Odyssey Square offers more than just easy access to London – it's a gateway to exploration and adventure. Situated close to the M25. Plus, with Gatwick Airport just a short journey way, you can jet off to exciting destination, whether it's a European city break, or a tropical paradise.



It is a haven for cyclists, with many routes which will take you through stunning landscapes. Nearby amenities abound, from local markets to supermarkets and cafes. The area offers a selection of schools providing a nurturing environment for children's educational journey.

ADVENTURE ROUTES

From Odyssey Square. All measured in minutes.



- 1 Purley Oaks Station Bus stop (Stop GB)
- 5 Purley Oaks Station
- 8 South Croydon Recreation Ground
- 8 PureGym Purley
- 15 Cumnor House Kindergarten & Pre-School
- 17 Harris Academy Purley



- 11 Museum of Croydon
- 11 Fairfield Halls
- 10 Oxygen Croydon
- 12 Whitegift shopping centre
- 36 Sutton United Football Club
- 46 Brockwell Lido

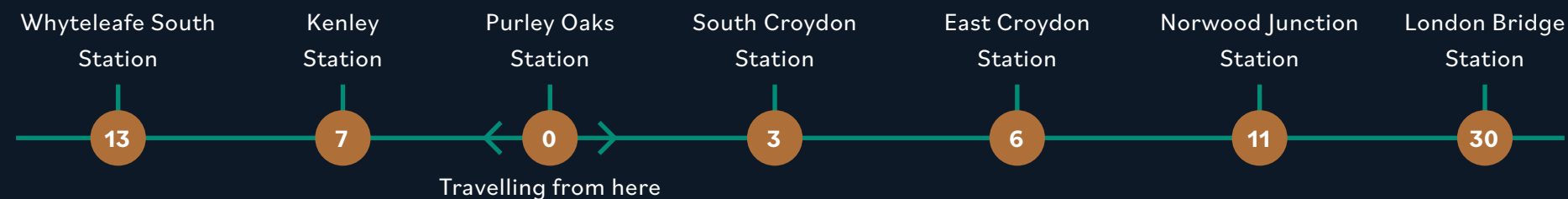


- 6 Tesco extra
- 15 Valley Park Retail Centre
- 22 Banstead Downs Golf Club
- 22 M25
- 35 Hobbledown Adventure Farm Park and Zoo
- 46 Wimbledon High Street

The journey times are only approximate. You can find out more about the travelling times from Transport for London and Google Maps.



South Eastern Railway



For those who prefer to travel by rail, Odyssey Square is conveniently located close to Purley Oaks Station giving direct routes into the heart of London and its iconic landmarks and world class attractions, and there are number of buses serving local routes.

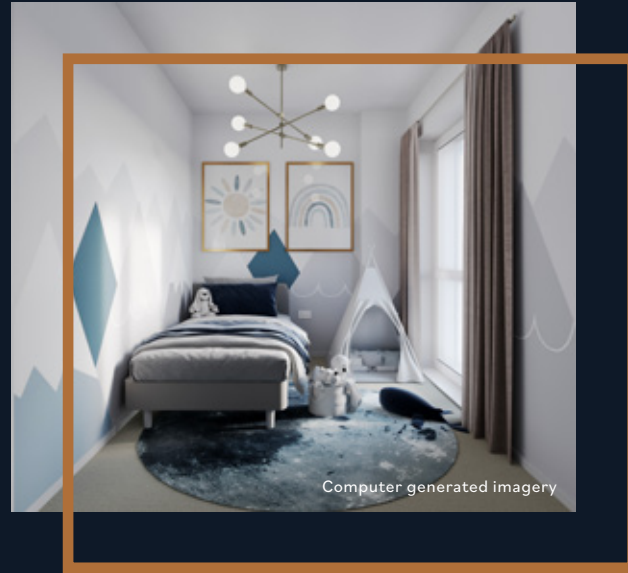
- Overground stations
- Bus stops

The journey times are only approximate. You can find out more about the travelling times from Transport for London and Google Maps.



Computer generated imagery

DESIGNS WITH IN MIND



Computer generated imagery

The living area of each 1, 2 and 3-bed Shared Ownership apartment is bathed in natural light. All apartments have high specs and benefit from their own private outdoor space as well as a communal courtyard and some apartments have an allocated parking space*.

Specifications may be subject to change due to our policy of continuous improvement and the finished product may vary from the information provided. All images shown are for illustration purpose only. Pages 10, 11 and 13 contain computer generated imageries. *Not every Shared Ownership apartment will have an allocated parking space.



Computer generated imagery

SPECIFICATIONS

Interior

- White slimline sockets (except kitchens)
- Vertical panel grained white doors
- Amtico Sun Bleached Oak flooring to the kitchen/living/dining and hallway areas
- Walls in Dulux matte emulsion Brilliant White

Exterior

- Single brushed wall mounted downlight
- Parking space allocated to specific plots*

Other

- Premier warranty (990 years lease)

Kitchens

- Symphony cupboards in New York Pearl Gloss
- Symphony worktop and upstand in Alpine White
- Frosted glass splashback
- Zanussi integrated appliances*
- Symphony Blanco Tipo 1.5 bowl sink
- Brushed chrome sockets
- LED spotlights

Bedrooms

- Sliding mirrored wardrobes to specific plots**
- Regency Cabaret Gabbiano carpet

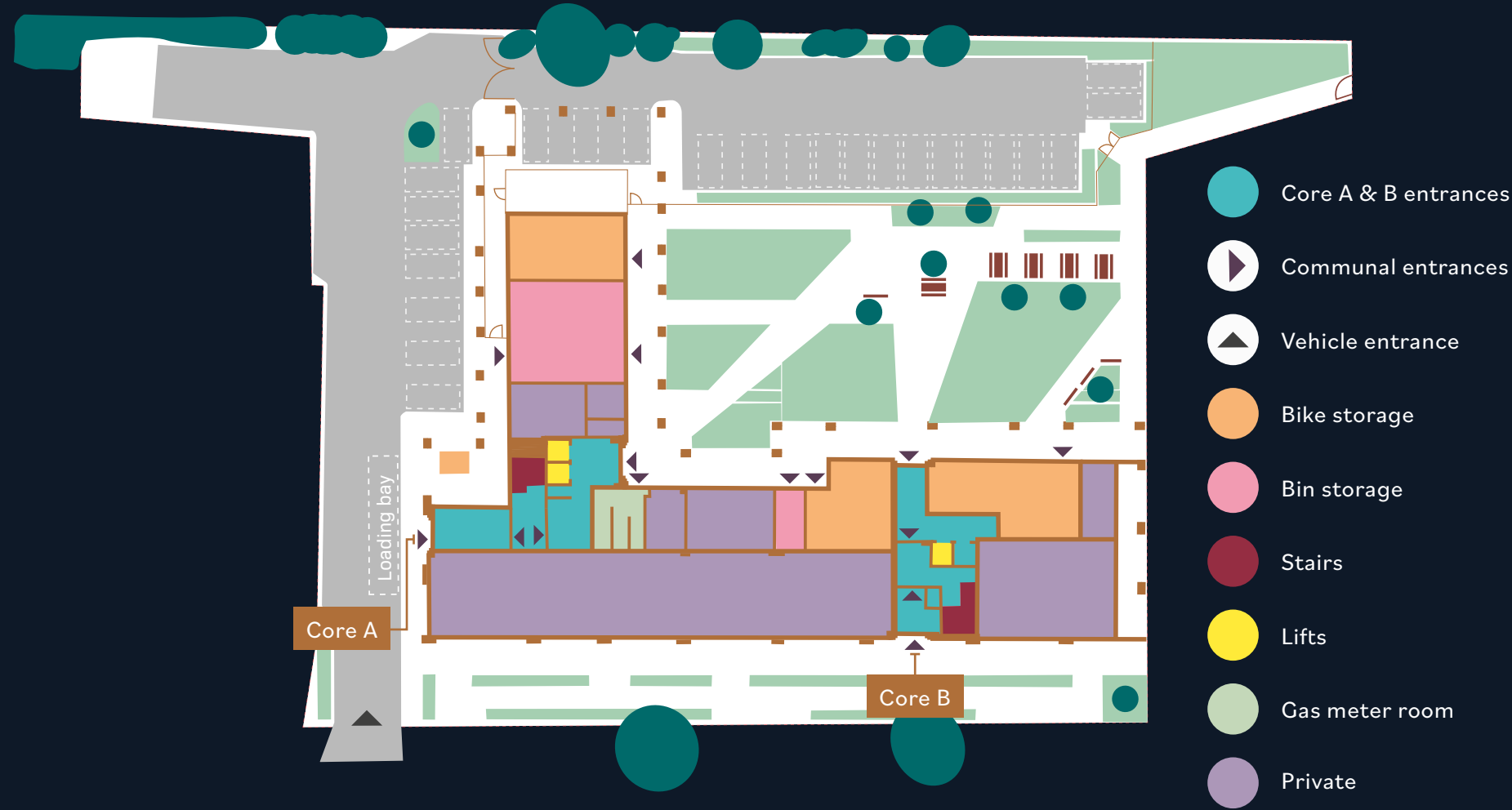
Bathrooms/En-suites

- LED spotlights
- Vitra basin and toilet
- Vado Notion taps and thermostatic mixers
- Ideal Standard Tempo Cube bath
- Porcelanosa Madagascar Natural flooring tiles to bathrooms
- Porcelanosa Park Blanco to ensuites***
- Bathroom's countertop in Graphite
- Ensuite's counter top in Dust Grey***
- Bathroom's recessed niche in Graphite
- Ensuite's recessed niches in Dust Grey***
- Porcelanosa Madagascar Natural to bathroom's wall tiling
- Porcelanosa Park Blanco to ensuite's wall tiling***
- Chrome ladder tower rail



Specifications may be subject to change due to our policy of continuous improvement and the finished product may vary from the information provided. Pages 10, 11 and 13 contain computer generated imageries. *Not every Shared Ownership apartment will have an allocated parking space. **Main bedrooms usually feature fitted wardrobes, but please be advised that not every bedroom will have a fitted wardrobe. ***The specifications of en-suites differ from those of the bathrooms. Please note that the bathroom's CGI does not represent an en-suite. For more information, please check with the Sales & Marketing Team.

FROM AN EYE IN THE SKY



The site maps are not drawn to scale. Any details and layouts on the site maps and plots may be subject to change. The displayed site maps are for illustrative purposes only and may not include all information, as some elements have been omitted. For more information, please consult with the Sales & Marketing Team.

PLOT LOCATOR



Shared Ownership homes
 Affordable Rented homes
 Communal entrances from Cores A and B



The site maps are not drawn to scale. Any details and layouts on the site maps and plots may be subject to change. The displayed site maps are for illustrative purposes only and may not include all information, as some elements have been omitted. For more information, please consult with the Sales & Marketing Team.

1-bed apartments

- Plot: A1.08 | Type: FT02 | Core: A
- Plot: A2.08 | Type: FT02 | Core: A
- Plot: A3.08 | Type: FT02 | Core: A
- Plot: A1.02 | Type: FT05 | Core: A
- Plot: A2.02 | Type: FT05 | Core: A
- Plot: A3.02 | Type: FT05 | Core: A
- Plot: A4.02 | Type: FT05 | Core: A
- Plot: A5.02 | Type: FT05 | Core: A
- Plot: A6.02 | Type: FT05 | Core: A
- Plot: A7.02 | Type: FT05 | Core: A
- Plot: A3.05 | Type: FT08 | Core: A
- Plot: A4.05 | Type: FT08 | Core: A
- Plot: A5.05 | Type: FT08 | Core: A
- Plot: A6.04 | Type: FT08 | Core: A
- Plot: A7.04 | Type: FT08 | Core: A
- Plot: B3.02 | Type: FT12 | Core: B
- Plot: B4.02 | Type: FT12 | Core: B
- Plot: B5.02 | Type: FT12 | Core: B
- Plot: B3.04 | Type: FT15 | Core: B
- Plot: B4.04 | Type: FT15 | Core: B
- Plot: B5.04 | Type: FT15 | Core: B
- Plot: B4.05 | Type: FT17 | Core: B
- Plot: B5.05 | Type: FT17 | Core: B
- Plot: A1.05 | Type: FT20 | Core: A
- Plot: A2.05 | Type: FT20 | Core: A

2-bed apartments

- Plot: A1.07 | Type: FT01 | Core: A
- Plot: A1.09 | Type: FT01 | Core: A
- Plot: A2.07 | Type: FT01 | Core: A
- Plot: A2.09 | Type: FT01 | Core: A
- Plot: A3.07 | Type: FT01 | Core: A
- Plot: A3.09 | Type: FT01 | Core: A
- Plot: A4.07 | Type: FT01 | Core: A
- Plot: A5.07 | Type: FT01 | Core: A
- Plot: A1.06 | Type: FT03 | Core: A
- Plot: A2.06 | Type: FT03 | Core: A
- Plot: A3.06 | Type: FT03 | Core: A
- Plot: A4.06 | Type: FT03 | Core: A
- Plot: A5.06 | Type: FT03 | Core: A
- Plot: A1.03 | Type: FT06 | Core: A
- Plot: A2.03 | Type: FT06 | Core: A
- Plot: A3.03 | Type: FT06 | Core: A
- Plot: A4.03 | Type: FT06 | Core: A
- Plot: A5.03 | Type: FT06 | Core: A
- Plot: A6.03 | Type: FT06 | Core: A
- Plot: A7.03 | Type: FT06 | Core: A
- Plot: A3.04 | Type: FT07 | Core: A
- Plot: A4.04 | Type: FT07 | Core: A
- Plot: A5.04 | Type: FT07 | Core: A
- Plot: B3.01 | Type: FT10 | Core: B
- Plot: B4.01 | Type: FT10 | Core: B

- Plot: B5.01 | Type: FT10 | Core: B
- Plot: B3.03 | Type: FT14 | Core: B
- Plot: B4.03 | Type: FT14 | Core: B
- Plot: B5.03 | Type: FT14 | Core: B
- Plot: B3.06 | Type: FT18 | Core: B
- Plot: B4.06 | Type: FT18 | Core: B
- Plot: B5.06 | Type: FT18 | Core: B
- Plot: A1.04 | Type: FT19 | Core: A
- Plot: A2.04 | Type: FT19 | Core: A

3-bed apartments

- Plot: A1.01 | Type: FT04 | Core: A
- Plot: A2.01 | Type: FT04 | Core: A
- Plot: A3.01 | Type: FT04 | Core: A
- Plot: A4.01 | Type: FT04 | Core: A
- Plot: A5.01 | Type: FT04 | Core: A
- Plot: A6.01 | Type: FT04 | Core: A
- Plot: A7.01 | Type: FT04 | Core: A

PLOT A1.01

Type: FT04 - 3 bed apartment

Total: 83.3m²

Kitchen/Living area: 23.8m²

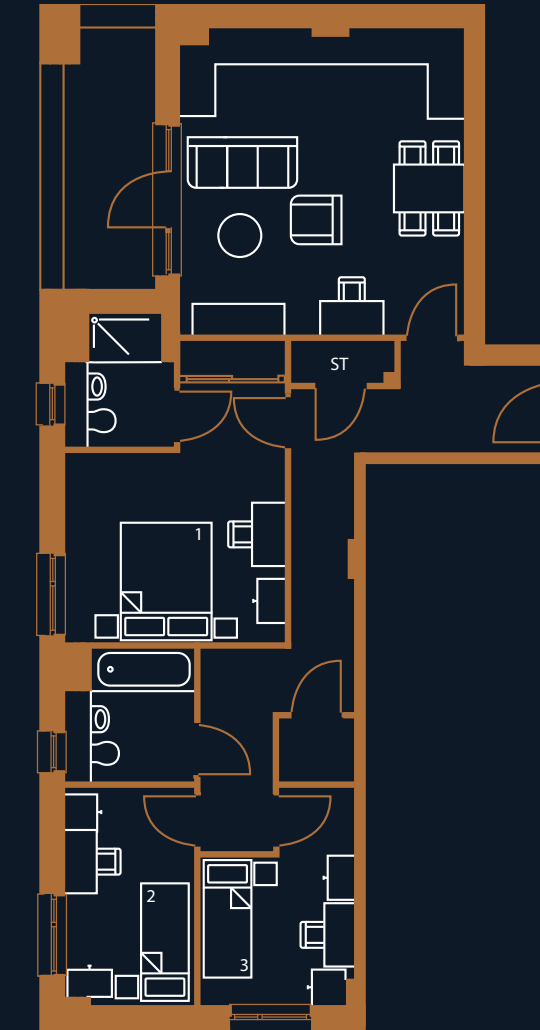
Bedroom 1: 14.7m²

Bedroom 2: 7.7m²

Bedroom 3: 7.7m²

Balcony: 7.1m²

1st floor: A1.01



The dimensions are only approximate. Any details and layouts are subject to change. The plans are not drawn to scale. Any layouts and details shown are for guidance only and should not be relied upon for carpet sizes, appliance sizes or items of furniture. No responsibility is taken for any error, omission or misstatement. The floorplans may not include all information, as some elements have been omitted. For more information, please consult with the Sales & Marketing Team.



PLOTS A2.01, A3.01, A4.01, A5.01, A6.01 & A7.01

Type: FT04 - 3 bed apartments

Total: 83.3m²

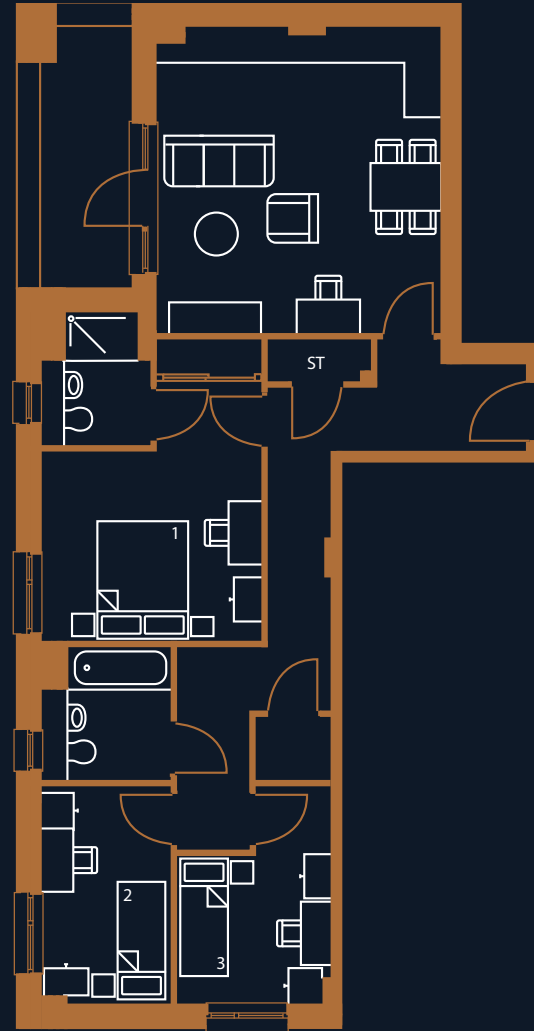
Kitchen/Living area: 23.8m²

Bedroom 1: 14.7m²

Bedroom 2: 7.7m²

Bedroom 3: 7.7m²

Balcony: 7.1m²



4th floor: A4.01



5th floor: A5.01



3rd floor: A3.01



6th floor: A6.01



2nd floor: A2.01



7th floor: A7.01



The dimensions are only approximate. Any details and layouts are subject to change. The plans are not drawn to scale. Any layouts and details shown are for guidance only and should not be relied upon for carpet sizes, appliance sizes or items of furniture. No responsibility is taken for any error, omission or misstatement. The floorplans may not include all information, as some elements have been omitted. For more information, please consult with the Sales & Marketing Team.



PLOTS A1.02, A2.02, A3.02, A4.02, A5.02, A6.02 & A7.02

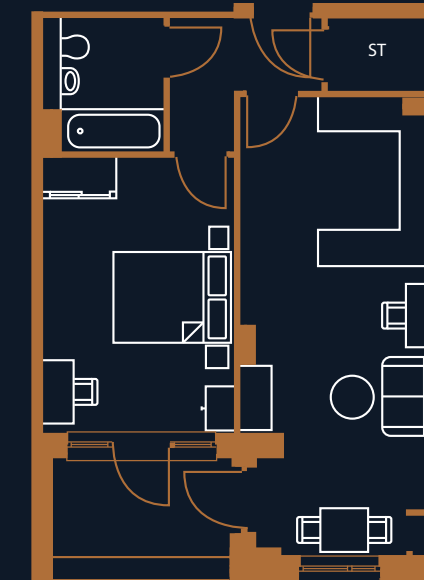
Type: FT05 - 1 bed apartments

Total: 50.6m²

Kitchen/Living area: 24.1m²

Bedroom: 14.4m²

Balcony: 5.2m²



3rd floor: A3.02



4th floor: A4.02



2nd floor: A2.02



5th floor: A5.02



1st floor: A1.02



6th floor: A6.02



7th floor: A7.02



The dimensions are only approximate. Any details and layouts are subject to change. The plans are not drawn to scale. Any layouts and details shown are for guidance only and should not be relied upon for carpet sizes, appliance sizes or items of furniture. No responsibility is taken for any error, omission or misstatement. The floorplans may not include all information, as some elements have been omitted. For more information, please consult with the Sales & Marketing Team.



PLOTS A1.03, A2.03, A3.03, A4.03, A5.03, A6.03 & A7.03



Type: FT06 - 2 bed apartments

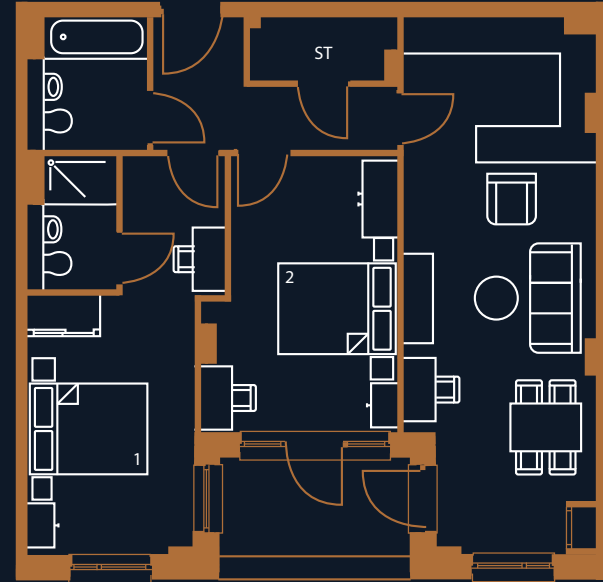
Total: 75.8m²

Kitchen/Living area: 27.3m²

Bedroom 1: 15.9m²

Bedroom 2: 13.6m²

Balcony: 5.6m²



3rd floor: A3.03



4th floor: A4.03



2nd floor: A2.03



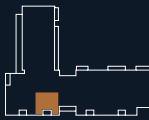
5th floor: A5.03



6th floor: A6.03



1st floor: A1.03



7th floor: A7.03



The dimensions are only approximate. Any details and layouts are subject to change. The plans are not drawn to scale. Any layouts and details shown are for guidance only and should not be relied upon for carpet sizes, appliance sizes or items of furniture. No responsibility is taken for any error, omission or misstatement. The floorplans may not include all information, as some elements have been omitted. For more information, please consult with the Sales & Marketing Team.

🦽 PLOTS A1.04 & A2.04



Type: FT19 - 2 bed apartments

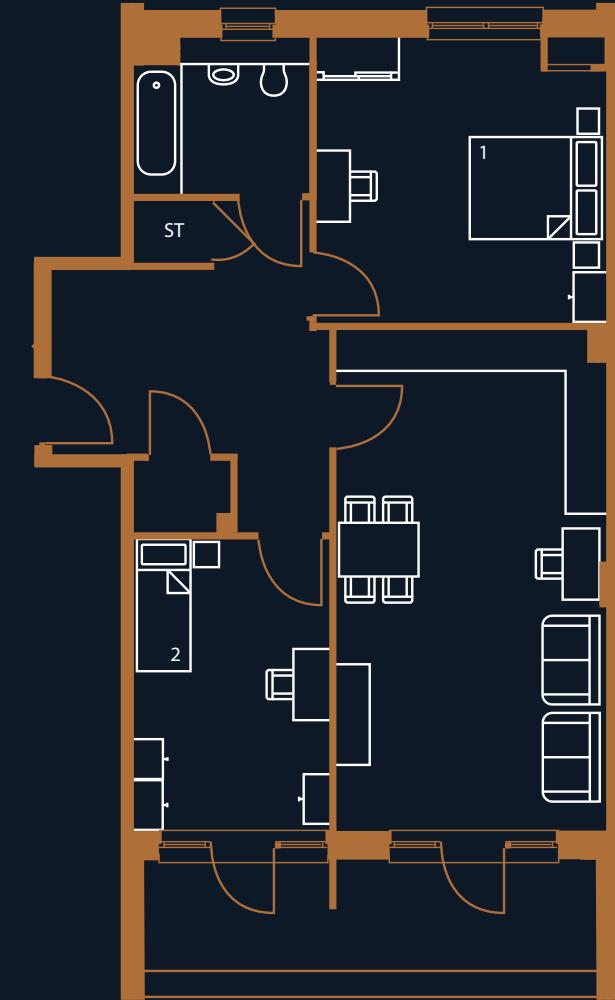
Total: 84.5m²

Kitchen/Living area: 29.3m²

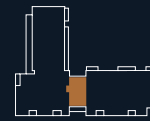
Bedroom 1: 17.9m²

Bedroom 2: 12.4m²

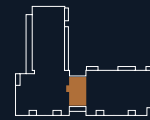
Balcony: 11.8m²



1st floor: A2.04



1st floor: A1.04



The dimensions are only approximate. Any details and layouts are subject to change. The plans are not drawn to scale. Any layouts and details shown are for guidance only and should not be relied upon for carpet sizes, appliance sizes or items of furniture. No responsibility is taken for any error, omission or misstatement. The floorplans may not include all information, as some elements have been omitted. For more information, please consult with the Sales & Marketing Team.

PLOTS A3.04, A4.04 & A5.04

Type: FT07 - 2 bed apartments

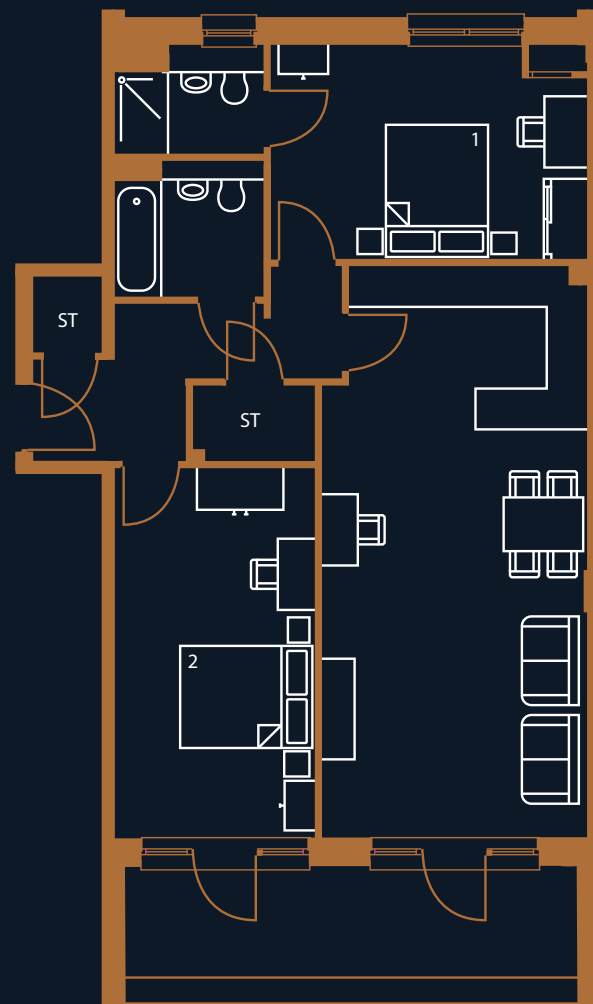
Total: 84.5m²

Kitchen/Living area: 32.2m²

Bedroom 1: 14.7m²

Bedroom 2: 16m²

Balcony: 11.8m²



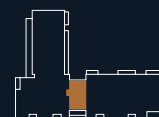
5th floor: A5.04



4th floor: A4.04



3rd floor: A3.04



The dimensions are only approximate. Any details and layouts are subject to change. The plans are not drawn to scale. Any layouts and details shown are for guidance only and should not be relied upon for carpet sizes, appliance sizes or items of furniture. No responsibility is taken for any error, omission or misstatement. The floorplans may not include all information, as some elements have been omitted. For more information, please consult with the Sales & Marketing Team.



PLOTS A1.05 & A2.05

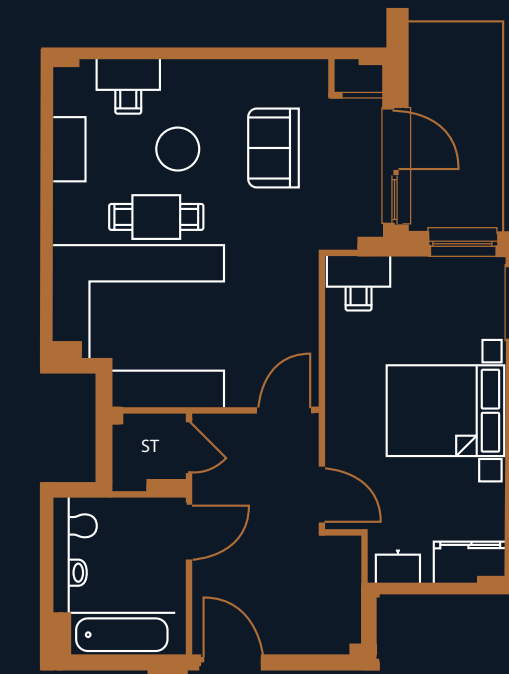
Type: FT20 - 1 bed apartments

Total: 62.2m²

Kitchen/Living area: 28m²

Bedroom: 15.6m²

Balcony: 5.2m²



2nd floor: A2.05



1st floor: A1.05



The dimensions are only approximate. Any details and layouts are subject to change. The plans are not drawn to scale. Any layouts and details shown are for guidance only and should not be relied upon for carpet sizes, appliance sizes or items of furniture. No responsibility is taken for any error, omission or misstatement. The floorplans may not include all information, as some elements have been omitted. For more information, please consult with the Sales & Marketing Team.



PLOTS A3.05, A4.05, A5.05, A6.04 & A7.04

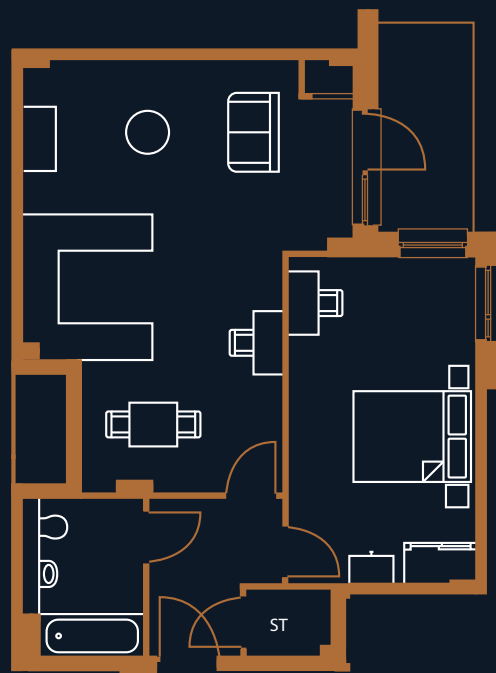
Type: FT08 - 1 bed apartments

Total: 62.2 m²

Kitchen/Living area: 32.3m²

Bedroom: 16.7 m²

Balcony: 5.2m²



5th floor: A5.05 6th floor: A6.04



4th floor: A4.05 7th floor: A7.04



3rd floor: A3.05



The dimensions are only approximate. Any details and layouts are subject to change. The plans are not drawn to scale. Any layouts and details shown are for guidance only and should not be relied upon for carpet sizes, appliance sizes or items of furniture. No responsibility is taken for any error, omission or misstatement. The floorplans may not include all information, as some elements have been omitted. For more information, please consult with the Sales & Marketing Team.



PLOTS A1.06, A2.06, A3.06, A4.06 & A5.06

Type: FT03 - 2 bed apartments

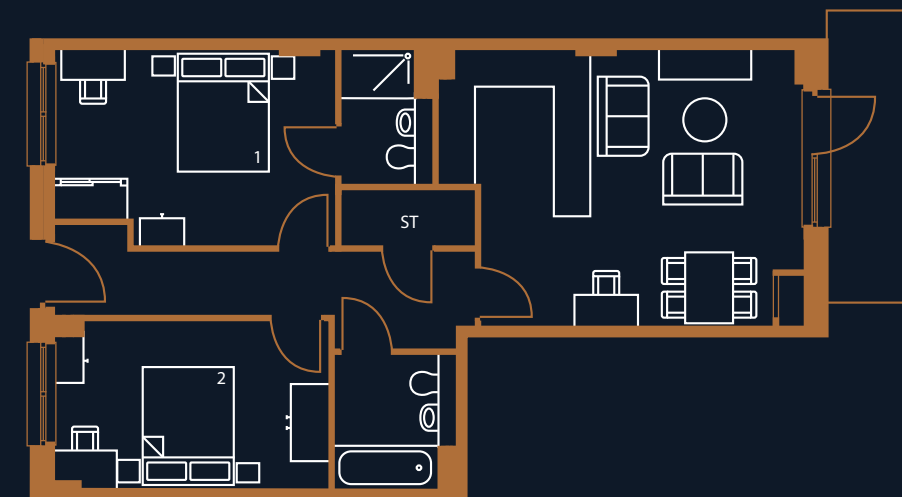
Total: 73.7m²

Kitchen/Living area: 25.6m²

Bedroom 1: 14.3m²

Bedroom 2: 12.4m²

Balcony: 7.2m²



3rd floor: A3.06 4th floor: A4.06



2nd floor: A2.06 5th floor: A5.06



1st floor: A1.06



The dimensions are only approximate. Any details and layouts are subject to change. The plans are not drawn to scale. Any layouts and details shown are for guidance only and should not be relied upon for carpet sizes, appliance sizes or items of furniture. No responsibility is taken for any error, omission or misstatement. The floorplans may not include all information, as some elements have been omitted. For more information, please consult with the Sales & Marketing Team.



PLOTS A1.07, A2.07 & A3.07

Type: FT01 - 2 bed apartments

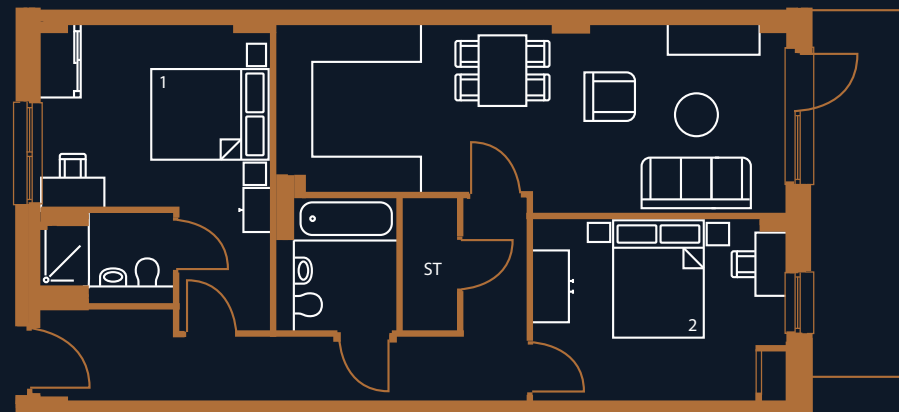
Total: 76.7m²

Kitchen/Living area: 24.8m²

Bedroom 1: 14.6m²

Bedroom 2: 12.6m²

Balcony: 9.1m²



3rd floor: A3.07



2nd floor: A2.07



1st floor: A1.07



The dimensions are only approximate. Any details and layouts are subject to change. The plans are not drawn to scale. Any layouts and details shown are for guidance only and should not be relied upon for carpet sizes, appliance sizes or items of furniture. No responsibility is taken for any error, omission or misstatement. The floorplans may not include all information, as some elements have been omitted. For more information, please consult with the Sales & Marketing Team.



PLOTS A4.07 & A5.07

Type: FT01 - 2 bed apartments

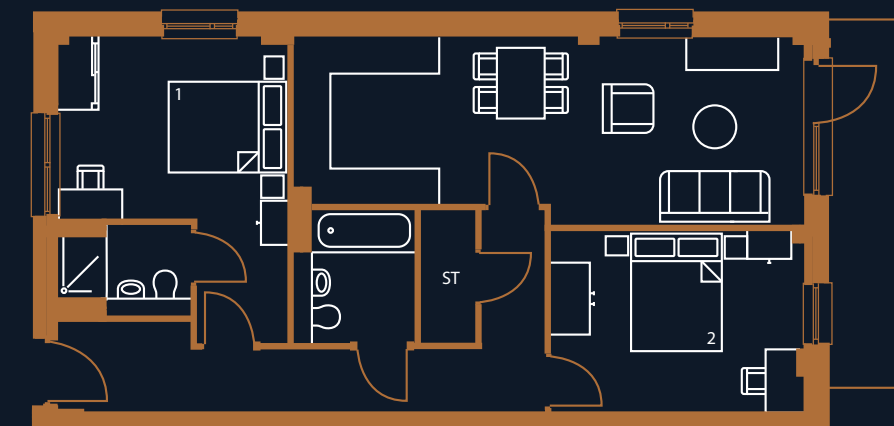
Total: 76.7m²

Kitchen/Living area: 24.8m²

Bedroom 1: 14.6m²

Bedroom 2: 12.6m²

Balcony: 9.1m²



5th floor: A5.07



4th floor: A4.07



The dimensions are only approximate. Any details and layouts are subject to change. The plans are not drawn to scale. Any layouts and details shown are for guidance only and should not be relied upon for carpet sizes, appliance sizes or items of furniture. No responsibility is taken for any error, omission or misstatement. The floorplans may not include all information, as some elements have been omitted. For more information, please consult with the Sales & Marketing Team.



PLOTS A1.08, A2.08 & A3.08

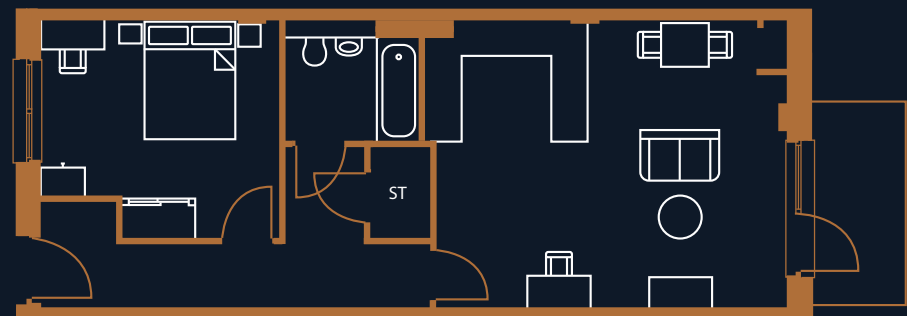
Type: FT02 - 1 bed apartments

Total: 58.7m²

Kitchen/Living area: 27.9m²

Bedroom: 13.3m²

Balcony: 5m²



3rd floor: A3.08



2nd floor: A2.08



1st floor: A1.08



The dimensions are only approximate. Any details and layouts are subject to change. The plans are not drawn to scale. Any layouts and details shown are for guidance only and should not be relied upon for carpet sizes, appliance sizes or items of furniture. No responsibility is taken for any error, omission or misstatement. The floorplans may not include all information, as some elements have been omitted. For more information, please consult with the Sales & Marketing Team.



PLOTS A1.09, A2.09 & A3.09

Type: FT01 - 2 bed apartments

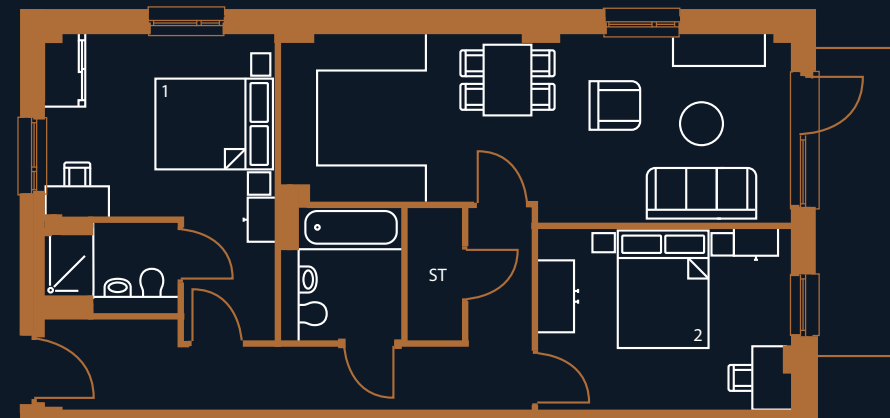
Total: 76.7m²

Kitchen/Living area: 24.8m²

Bedroom 1: 14.6m²

Bedroom 2: 12.6m²

Balcony: 7.6m²



3rd floor: A3.09



2nd floor: A2.09



1st floor: A1.09



The dimensions are only approximate. Any details and layouts are subject to change. The plans are not drawn to scale. Any layouts and details shown are for guidance only and should not be relied upon for carpet sizes, appliance sizes or items of furniture. No responsibility is taken for any error, omission or misstatement. The floorplans may not include all information, as some elements have been omitted. For more information, please consult with the Sales & Marketing Team.



PLOTS B3.01, B4.01 & B5.01

Type: FT10 - 2 bed apartments

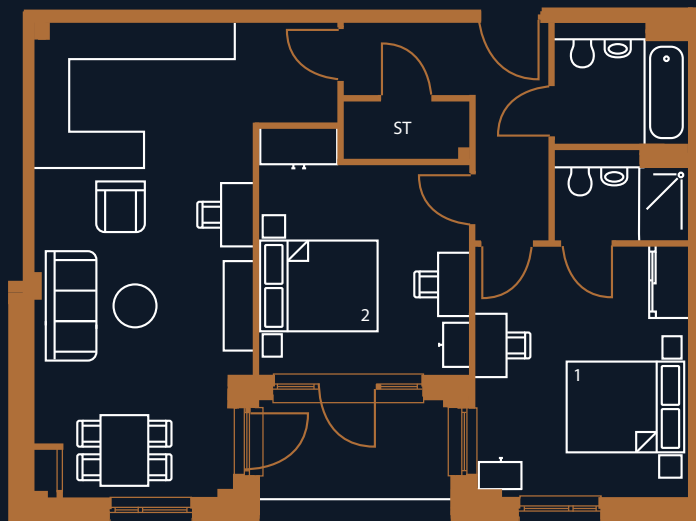
Total: 76.9m²

Kitchen/Living area: 30.2m²

Bedroom 1: 14.6m²

Bedroom 2: 12.8m²

Balcony: 5.6m²



5th floor: B5.01



4th floor: B4.01



3rd floor: B3.01



The dimensions are only approximate. Any details and layouts are subject to change. The plans are not drawn to scale. Any layouts and details shown are for guidance only and should not be relied upon for carpet sizes, appliance sizes or items of furniture. No responsibility is taken for any error, omission or misstatement. The floorplans may not include all information, as some elements have been omitted. For more information, please consult with the Sales & Marketing Team.



PLOTS B3.02, B4.02 & B5.02

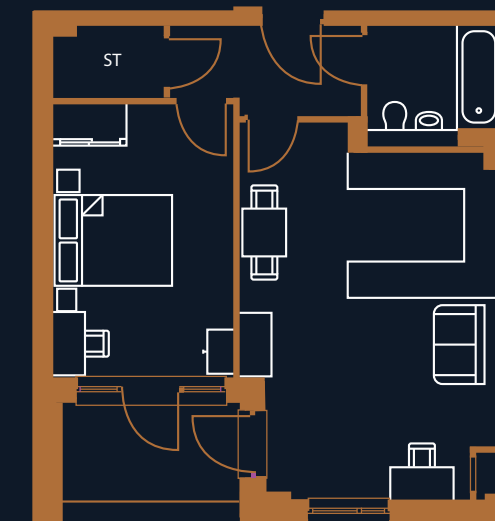
Type: FT12 - 1 bed apartments

Total: 51m²

Kitchen/Living area: 25m²

Bedroom: 13.5m²

Balcony: 5.2m²



5th floor: B5.02



4th floor: B4.02



3rd floor: B3.02



The dimensions are only approximate. Any details and layouts are subject to change. The plans are not drawn to scale. Any layouts and details shown are for guidance only and should not be relied upon for carpet sizes, appliance sizes or items of furniture. No responsibility is taken for any error, omission or misstatement. The floorplans may not include all information, as some elements have been omitted. For more information, please consult with the Sales & Marketing Team.



PLOTS B3.03, B4.03 & B5.03

Type: FT14 - 2 bed apartments

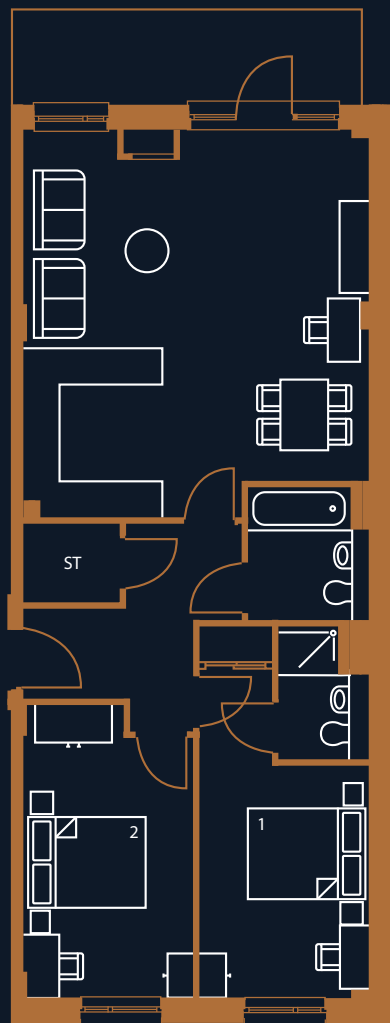
Total: 82m²

Kitchen/Living area: 35.4m²

Bedroom 1: 13.5m²

Bedroom 2: 13m²

Balcony: 8.7m²



5th floor: B5.03



4th floor: B4.03



3rd floor: B3.03



The dimensions are only approximate. Any details and layouts are subject to change. The plans are not drawn to scale. Any layouts and details shown are for guidance only and should not be relied upon for carpet sizes, appliance sizes or items of furniture. No responsibility is taken for any error, omission or misstatement. The floorplans may not include all information, as some elements have been omitted. For more information, please consult with the Sales & Marketing Team.



PLOTS B3.04, B4.04 & B5.04

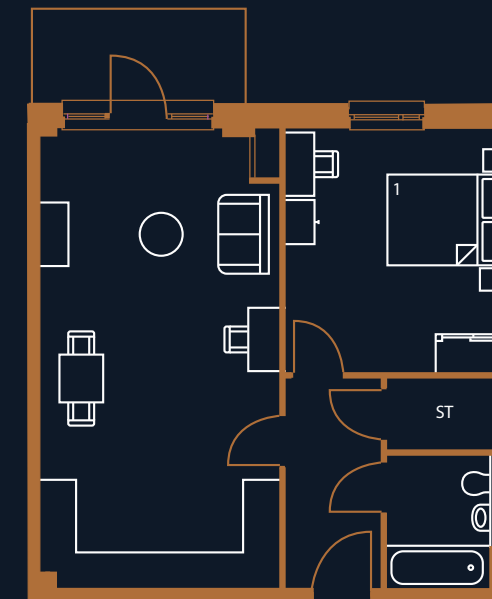
Type: FT15 - 1 bed apartments

Total: 58.9m²

Kitchen/Living area: 30.2m²

Bedroom 1: 14.8m²

Balcony: 5.2m²



5th floor: B5.04



4th floor: B4.04



3rd floor: B3.04

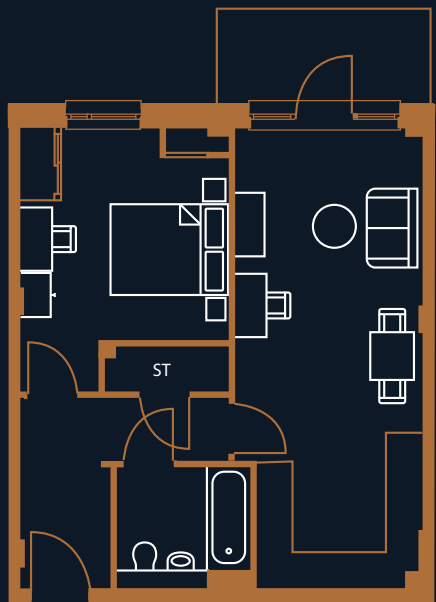


The dimensions are only approximate. Any details and layouts are subject to change. The plans are not drawn to scale. Any layouts and details shown are for guidance only and should not be relied upon for carpet sizes, appliance sizes or items of furniture. No responsibility is taken for any error, omission or misstatement. The floorplans may not include all information, as some elements have been omitted. For more information, please consult with the Sales & Marketing Team.



PLOTS B4.05 & B5.05

- Type:** FT17 - 1 bed apartments
- Total:** 50.6m²
- Kitchen/Living area:** 22.8m²
- Bedroom 1:** 13.2m²
- Balcony:** 5.2m²



5th floor: B5.05



4th floor: B4.05

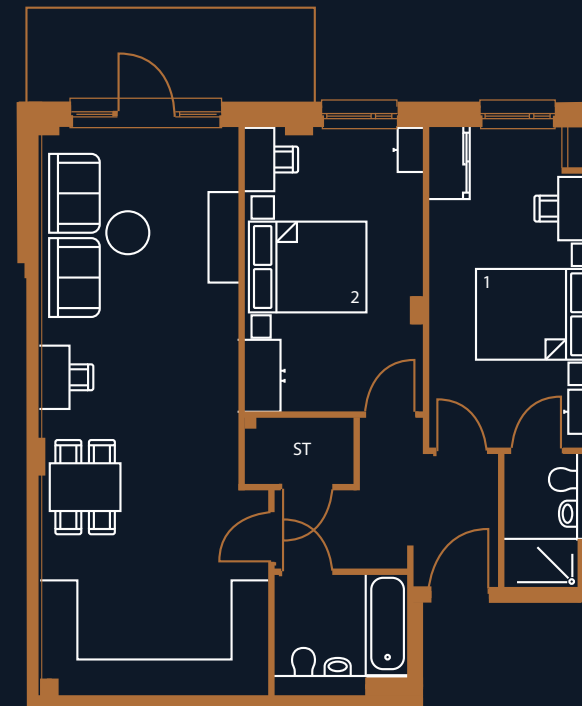


The dimensions are only approximate. Any details and layouts are subject to change. The plans are not drawn to scale. Any layouts and details shown are for guidance only and should not be relied upon for carpet sizes, appliance sizes or items of furniture. No responsibility is taken for any error, omission or misstatement. The floorplans may not include all information, as some elements have been omitted. For more information, please consult with the Sales & Marketing Team.



PLOTS B3.06, B4.06 & B5.06

- Type:** FT18 - 2 bed apartments
- Total:** 80.6m²
- Kitchen/Living area:** 32.3m²
- Bedroom 1:** 14.6m²
- Bedroom 2:** 13.9m²
- Balcony:** 7.1m²



5th floor: B5.06



4th floor: B4.06



3rd floor: B3.06



The dimensions are only approximate. Any details and layouts are subject to change. The plans are not drawn to scale. Any layouts and details shown are for guidance only and should not be relied upon for carpet sizes, appliance sizes or items of furniture. No responsibility is taken for any error, omission or misstatement. The floorplans may not include all information, as some elements have been omitted. For more information, please consult with the Sales & Marketing Team.



GENERAL INFO & ENQUIRIES

About us

Paragon Asra Housing, known as PA Housing, owns more than 23,000 homes in London, Surrey and the Midlands. We specialise in providing Shared Ownership homes in London, Surrey and the Midlands.

PA Housing is committed to working together with our stakeholders to make a difference to our customers and communities. We are dedicated to finding innovative ways to involve our residents, while empowering our people to be unashamedly bold, doing whatever it takes to deliver more quality homes and services we can all be proud of.

Contact us

www.pahousing.co.uk/odysseysquare

odysseysquare@pahousing.co.uk

0203 3940 078



Eligibility & disclaimer

Income threshold apply, speak to the Sales and Marketing Team to find out more.

The particulars within this document are for illustrative purposes and should be treated as guidance only. They cannot be relied upon as accurately describing any of the specified matters prescribed by any Order made under The Consumer Protection from Unfair Trading Regulations 2008. Nor do they constitute a contract, part of a contract, or warranty. A mortgage may be required. Service charges, rent and other costs may apply. Your home is at risk of repossession if you do not keep up repayments on a loan secured against it. Terms and conditions apply.

