

**ODYSSEY**

— SOUTH CROYDON —

**SQUARE**

— ODYSSEY SQUARE —  
HOME IS WHERE EVERY  
CORNER HOLDS AN  
ADVENTURE



# MIGHTY DEVELOPMENT

Introducing 66 stylish Shared Ownership apartments in South Croydon, offering a wide range of 1, 2 and 3 beds. Enjoy the beauty of a courtyard within a vibrant community. Ideal for singles, couples, and families.





# FALL IN LOVE WITH THE AREA

South Croydon in Greater London offers a unique blend of history, culture and modern convenience. With its rich heritage, diverse shopping scene, and iconic landmarks, South Croydon captivates residents and visitors alike, making it a sought-after destination in which to live, work and explore.



Croydon is home to one of the most iconic landmarks in the country, Shirley Windmill which is a testament to the area's agricultural past. For those seeking retail therapy, it boasts a diverse array of shops and boutiques, from high-street brands to the independent retailers. For nature enthusiasts, it offers an abundance of green spaces. Take a leisurely stroll through Queens Garden or enjoy a picnic in one of the many leafy parks scattered throughout the area.







## WITHIN REACH

Odyssey Square offers more than just easy access to London – it's a gateway to exploration and adventure. Situated close to the M25. Plus, with Gatwick Airport just a short journey way, you can jet off to exciting destination, whether it's a European city break, or a tropical paradise.



It is a haven for cyclists, with many routes which will take you through stunning landscapes. Nearby amenities abound, from local markets to supermarkets and cafes. The area offers a selection of schools providing a nurturing environment for children's educational journey.



# ADVENTURE ROUTES

From Odyssey Square. All measured in minutes.



- 1 Purley Oaks Station Bus stop (Stop GB)
- 5 Purley Oaks Station
- 8 South Croydon Recreation Ground
- 8 PureGym Purley
- 15 Cumnor House Kindergarten & Pre-School
- 17 Harris Academy Purley



- 11 Museum of Croydon
- 11 Fairfield Halls
- 10 Oxygen Croydon
- 12 Whitegift shopping centre
- 36 Sutton United Football Club
- 46 Brockwell Lido

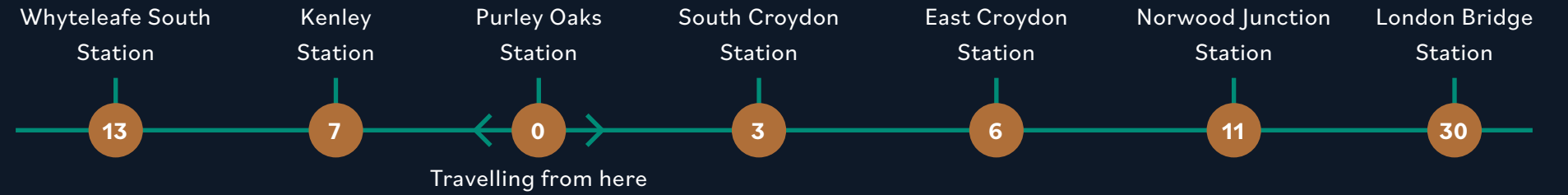


- 6 Tesco extra
- 15 Valley Park Retail Centre
- 22 Banstead Downs Golf Club
- 22 M25
- 35 Hobbledown Adventure Farm Park and Zoo
- 46 Wimbledon High Street

The journey times are only approximate. You can find out more about the travelling times from Transport for London and Google Maps.



## South Eastern Railway



For those who prefer to travel by rail, Odyssey Square is conveniently located close to Purley Oaks Station giving direct routes into the heart of London and its iconic landmarks and world class attractions, and there are number of buses serving local routes.

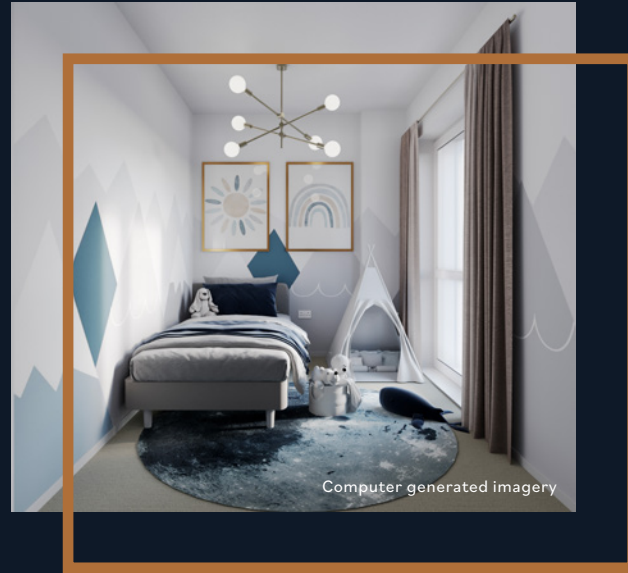


The journey times are only approximate. You can find out more about the travelling times from Transport for London and Google Maps.



Computer generated imagery

# DESIGNS WITH IN MIND



Computer generated imagery

The living area of each 1, 2 and 3-bed Shared Ownership apartment is bathed in natural light. All apartments have high specs and benefit from their own private outdoor space as well as a communal courtyard and some apartments have an allocated parking space\*.

Specifications may be subject to change due to our policy of continuous improvement and the finished product may vary from the information provided. All images shown are for illustration purpose only. Pages 10, 11 and 13 contain computer generated imageries. \*Not every Shared Ownership apartment will have an allocated parking space.



Computer generated imagery



# SPECIFICATIONS

## Interior

- White slimline sockets (except kitchens)
- Vertical panel grained white doors
- Amtico Sun Bleached Oak flooring to the kitchen/living/dining and hallway areas
- Walls in Dulux matte emulsion Brilliant White
- Blinds fitted throughout

## Exterior

- Single brushed wall mounted downlight
- Parking space allocated to specific plots\*

## Other

- Premier warranty (990 years lease)

## Kitchens

- Symphony cupboards in New York Pearl Gloss
- Symphony worktop and upstand in Alpine White
- Frosted glass splashback
- Zanussi integrated appliances\*
- Symphony Blanco Tipo 1.5 bowl sink
- Brushed chrome sockets
- LED spotlights

## Bedrooms

- Sliding mirrored wardrobes to specific plots\*\*
- Regency Cabaret Gabbiano carpet

## Bathrooms/En-suites

- LED spotlights
- Vitra basin and toilet
- Vado Notion taps and thermostatic mixers
- Ideal Standard Tempo Cube bath
- Porcelanosa Madagascar Natural flooring tiles to bathrooms
- Porcelanosa Park Blanco to ensuites\*\*\*
- Bathroom's countertop in Graphite
- Ensuite's counter top in Dust Grey\*\*\*
- Bathroom's recessed niche in Graphite
- Ensuite's recessed niches in Dust Grey\*\*\*
- Porcelanosa Madagascar Natural to bathroom's wall tiling
- Porcelanosa Park Blanco to ensuite's wall tiling\*\*\*
- Chrome ladder tower rail



Computer generated imagery

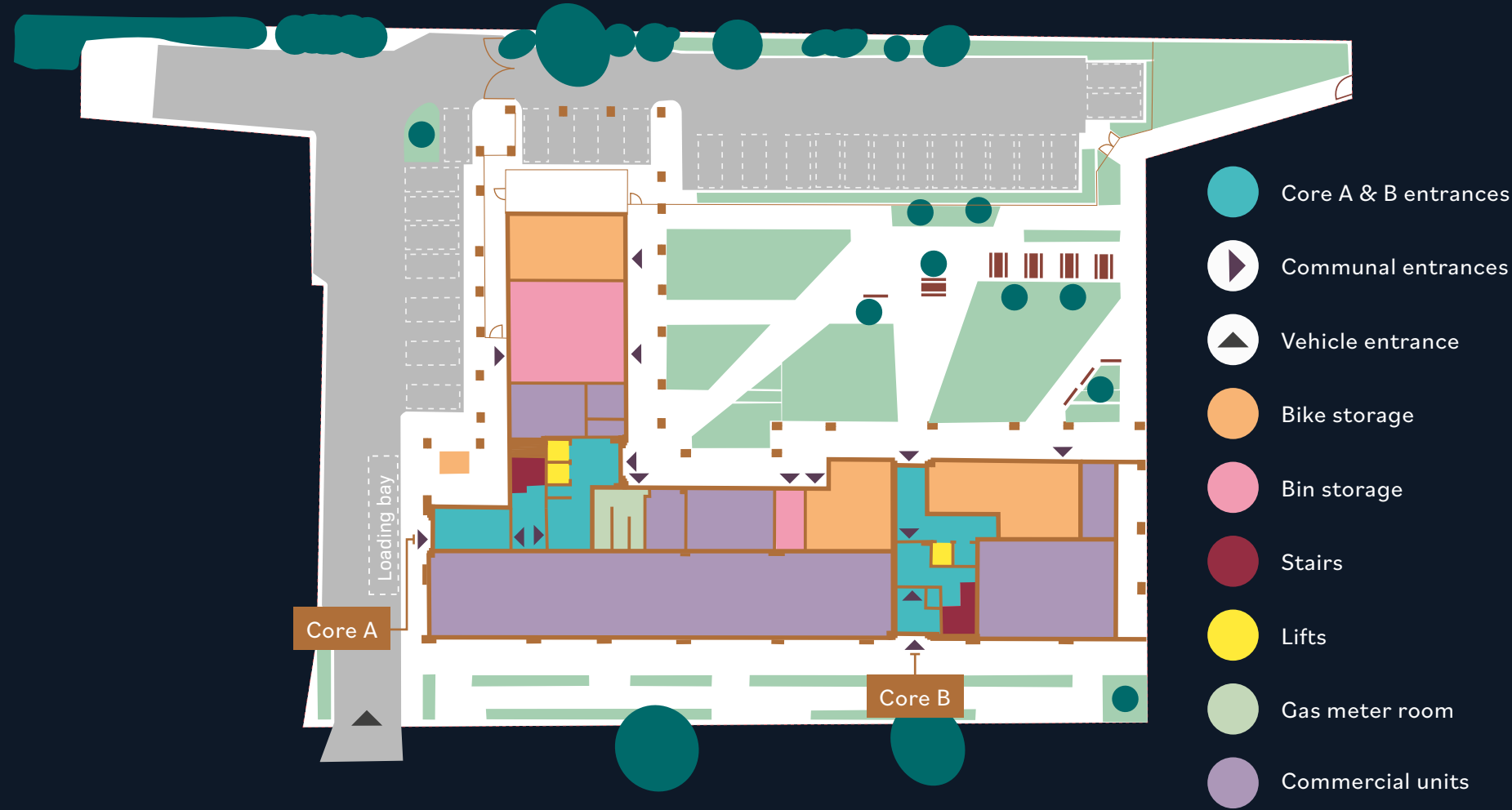


Computer generated imagery

Specifications may be subject to change due to our policy of continuous improvement and the finished product may vary from the information provided. Pages 10, 11 and 13 contain computer generated imageries. \*Not every Shared Ownership apartment will have an allocated parking space. \*\*Main bedrooms usually feature fitted wardrobes, but please be advised that not every bedroom will have a fitted wardrobe. \*\*\*The specifications of en-suites differ from those of the bathrooms. Please note that the bathroom's CGI does not represent an en-suite. For more information, please check with the Sales & Marketing Team.



# FROM AN EYE IN THE SKY



The site maps are not drawn to scale. Any details and layouts on the site maps and plots may be subject to change. The displayed site maps are for illustrative purposes only and may not include all information, as some elements have been omitted. For more information, please consult with the Sales & Marketing Team.

# PLOT LOCATOR



- Shared Ownership homes
- Affordable Rented homes
- Communal entrances from Cores A and B



The site maps are not drawn to scale. Any details and layouts on the site maps and plots may be subject to change. The displayed site maps are for illustrative purposes only and may not include all information, as some elements have been omitted. For more information, please consult with the Sales & Marketing Team.



### 1-bed apartments

- Plot: A1.08 | Type: FT02 | Core: A
- Plot: A2.08 | Type: FT02 | Core: A
- Plot: A3.08 | Type: FT02 | Core: A
- Plot: A1.02 | Type: FT05 | Core: A
- Plot: A2.02 | Type: FT05 | Core: A
- Plot: A3.02 | Type: FT05 | Core: A
- Plot: A4.02 | Type: FT05 | Core: A
- Plot: A5.02 | Type: FT05 | Core: A
- Plot: A6.02 | Type: FT05 | Core: A
- Plot: A7.02 | Type: FT05 | Core: A
- Plot: A3.05 | Type: FT08 | Core: A
- Plot: A4.05 | Type: FT08 | Core: A
- Plot: A5.05 | Type: FT08 | Core: A
- Plot: A6.04 | Type: FT08 | Core: A
- Plot: A7.04 | Type: FT08 | Core: A
- Plot: B3.02 | Type: FT12 | Core: B
- Plot: B4.02 | Type: FT12 | Core: B
- Plot: B5.02 | Type: FT12 | Core: B
- Plot: B3.04 | Type: FT15 | Core: B
- Plot: B4.04 | Type: FT15 | Core: B
- Plot: B5.04 | Type: FT15 | Core: B
- Plot: B4.05 | Type: FT17 | Core: B
- Plot: B5.05 | Type: FT17 | Core: B
- Plot: A1.05 | Type: FT20 | Core: A
- Plot: A2.05 | Type: FT20 | Core: A

### 2-bed apartments

- Plot: A1.07 | Type: FT01 | Core: A
- Plot: A1.09 | Type: FT01 | Core: A
- Plot: A2.07 | Type: FT01 | Core: A
- Plot: A2.09 | Type: FT01 | Core: A
- Plot: A3.07 | Type: FT01 | Core: A
- Plot: A3.09 | Type: FT01 | Core: A
- Plot: A4.07 | Type: FT01 | Core: A
- Plot: A5.07 | Type: FT01 | Core: A
- Plot: A1.06 | Type: FT03 | Core: A
- Plot: A2.06 | Type: FT03 | Core: A
- Plot: A3.06 | Type: FT03 | Core: A
- Plot: A4.06 | Type: FT03 | Core: A
- Plot: A5.06 | Type: FT03 | Core: A
- Plot: A1.03 | Type: FT06 | Core: A
- Plot: A2.03 | Type: FT06 | Core: A
- Plot: A3.03 | Type: FT06 | Core: A
- Plot: A4.03 | Type: FT06 | Core: A
- Plot: A5.03 | Type: FT06 | Core: A
- Plot: A6.03 | Type: FT06 | Core: A
- Plot: A7.03 | Type: FT06 | Core: A
- Plot: A3.04 | Type: FT07 | Core: A
- Plot: A4.04 | Type: FT07 | Core: A
- Plot: A5.04 | Type: FT07 | Core: A
- Plot: B3.01 | Type: FT10 | Core: B
- Plot: B4.01 | Type: FT10 | Core: B

- Plot: B5.01 | Type: FT10 | Core: B
- Plot: B3.03 | Type: FT14 | Core: B
- Plot: B4.03 | Type: FT14 | Core: B
- Plot: B5.03 | Type: FT14 | Core: B
- Plot: B3.06 | Type: FT18 | Core: B
- Plot: B4.06 | Type: FT18 | Core: B
- Plot: B5.06 | Type: FT18 | Core: B
- Plot: A1.04 | Type: FT19 | Core: A
- Plot: A2.04 | Type: FT19 | Core: A

### 3-bed apartments

- Plot: A1.01 | Type: FT04 | Core: A
- Plot: A2.01 | Type: FT04 | Core: A
- Plot: A3.01 | Type: FT04 | Core: A
- Plot: A4.01 | Type: FT04 | Core: A
- Plot: A5.01 | Type: FT04 | Core: A
- Plot: A6.01 | Type: FT04 | Core: A
- Plot: A7.01 | Type: FT04 | Core: A

## PLOT A1.01

**Type:** FT04 - 3 bed apartment

**Total:** 83.3m<sup>2</sup>

**Kitchen/Living area:** 23.8m<sup>2</sup>

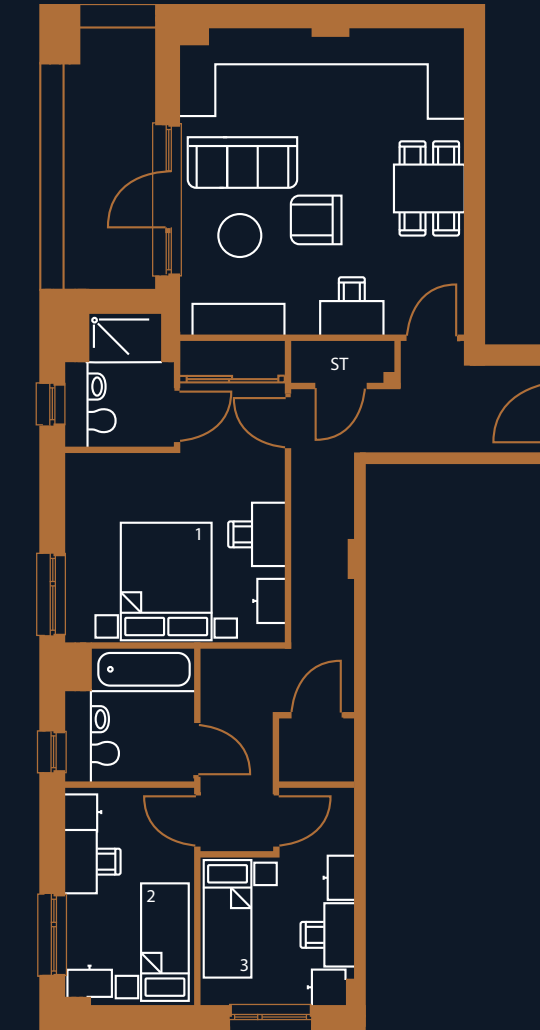
**Bedroom 1:** 14.7m<sup>2</sup>

**Bedroom 2:** 7.7m<sup>2</sup>

**Bedroom 3:** 7.7m<sup>2</sup>

**Balcony:** 7.1m<sup>2</sup>

1<sup>st</sup> floor: A1.01



The dimensions are only approximate. Any details and layouts are subject to change. The plans are not drawn to scale. Any layouts and details shown are for guidance only and should not be relied upon for carpet sizes, appliance sizes or items of furniture. No responsibility is taken for any error, omission or misstatement. The floorplans may not include all information, as some elements have been omitted. For more information, please consult with the Sales & Marketing Team.





## PLOTS A2.01, A3.01, A4.01, A5.01, A6.01 & A7.01

**Type:** FT04 - 3 bed apartments

**Total:** 83.3m<sup>2</sup>

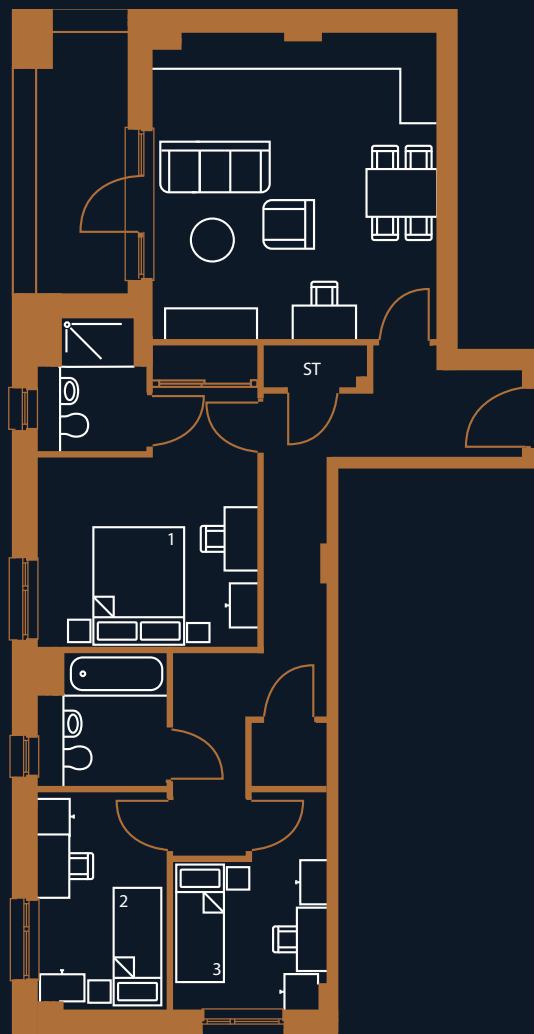
**Kitchen/Living area:** 23.8m<sup>2</sup>

**Bedroom 1:** 14.7m<sup>2</sup>

**Bedroom 2:** 7.7m<sup>2</sup>

**Bedroom 3:** 7.7m<sup>2</sup>

**Balcony:** 7.1m<sup>2</sup>



4<sup>th</sup> floor: A4.01



5<sup>th</sup> floor: A5.01



3<sup>rd</sup> floor: A3.01



6<sup>th</sup> floor: A6.01



2<sup>nd</sup> floor: A2.01



7<sup>th</sup> floor: A7.01



The dimensions are only approximate. Any details and layouts are subject to change. The plans are not drawn to scale. Any layouts and details shown are for guidance only and should not be relied upon for carpet sizes, appliance sizes or items of furniture. No responsibility is taken for any error, omission or misstatement. The floorplans may not include all information, as some elements have been omitted. For more information, please consult with the Sales & Marketing Team.



## PLOTS A1.02, A2.02, A3.02, A4.02, A5.02, A6.02 & A7.02

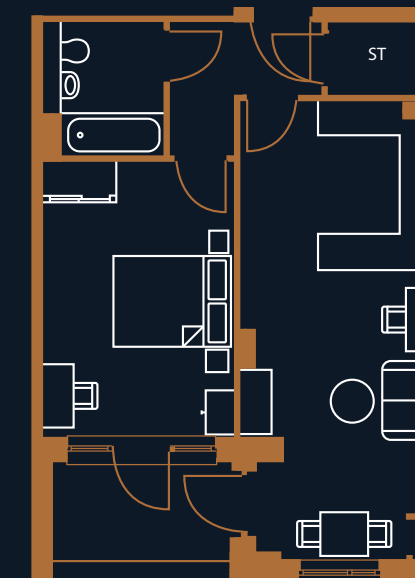
**Type:** FT05 - 1 bed apartments

**Total:** 50.6m<sup>2</sup>

**Kitchen/Living area:** 24.1m<sup>2</sup>

**Bedroom:** 14.4m<sup>2</sup>

**Balcony:** 5.2m<sup>2</sup>



3<sup>rd</sup> floor: A3.02



4<sup>th</sup> floor: A4.02



2<sup>nd</sup> floor: A2.02



5<sup>th</sup> floor: A5.02



1<sup>st</sup> floor: A1.02



6<sup>th</sup> floor: A6.02



7<sup>th</sup> floor: A7.02



The dimensions are only approximate. Any details and layouts are subject to change. The plans are not drawn to scale. Any layouts and details shown are for guidance only and should not be relied upon for carpet sizes, appliance sizes or items of furniture. No responsibility is taken for any error, omission or misstatement. The floorplans may not include all information, as some elements have been omitted. For more information, please consult with the Sales & Marketing Team.





# PLOTS A1.03, A2.03, A3.03, A4.03, A5.03, A6.03 & A7.03



**Type:** FT06 - 2 bed apartments

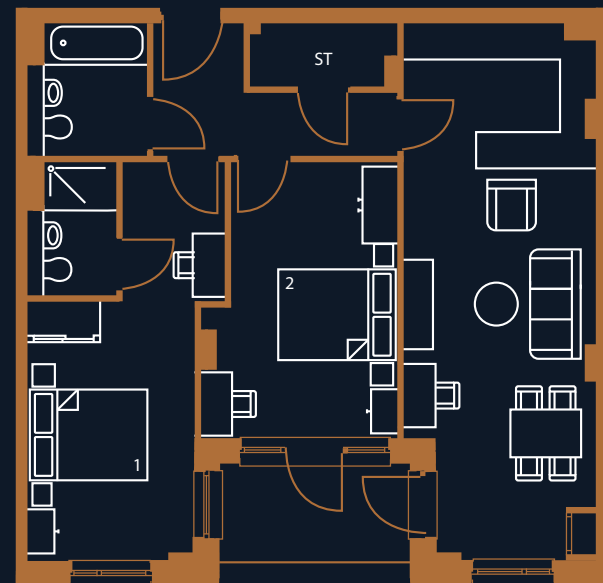
**Total:** 75.8m<sup>2</sup>

**Kitchen/Living area:** 27.3m<sup>2</sup>

**Bedroom 1:** 15.9m<sup>2</sup>

**Bedroom 2:** 13.6m<sup>2</sup>

**Balcony:** 5.6m<sup>2</sup>



3<sup>rd</sup> floor: A3.03

4<sup>th</sup> floor: A4.03



2<sup>nd</sup> floor: A2.03

5<sup>th</sup> floor: A5.03



1<sup>st</sup> floor: A1.03

6<sup>th</sup> floor: A6.03



7<sup>th</sup> floor: A7.03



The dimensions are only approximate. Any details and layouts are subject to change. The plans are not drawn to scale. Any layouts and details shown are for guidance only and should not be relied upon for carpet sizes, appliance sizes or items of furniture. No responsibility is taken for any error, omission or misstatement. The floorplans may not include all information, as some elements have been omitted. For more information, please consult with the Sales & Marketing Team.

# PLOTS A1.04 & A2.04



**Type:** FT19 - 2 bed apartments

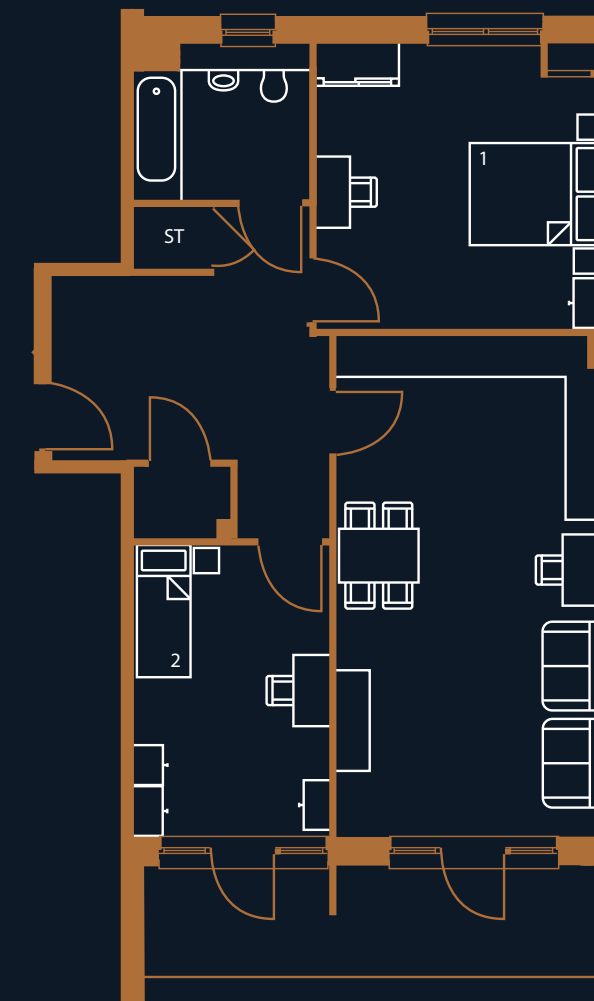
**Total:** 84.5m<sup>2</sup>

**Kitchen/Living area:** 29.3m<sup>2</sup>

**Bedroom 1:** 17.9m<sup>2</sup>

**Bedroom 2:** 12.4m<sup>2</sup>

**Balcony:** 11.8m<sup>2</sup>



1<sup>st</sup> floor: A2.04



1<sup>st</sup> floor: A1.04



The dimensions are only approximate. Any details and layouts are subject to change. The plans are not drawn to scale. Any layouts and details shown are for guidance only and should not be relied upon for carpet sizes, appliance sizes or items of furniture. No responsibility is taken for any error, omission or misstatement. The floorplans may not include all information, as some elements have been omitted. For more information, please consult with the Sales & Marketing Team.



# PLOTS A3.04, A4.04 & A5.04

**Type:** FT07 - 2 bed apartments

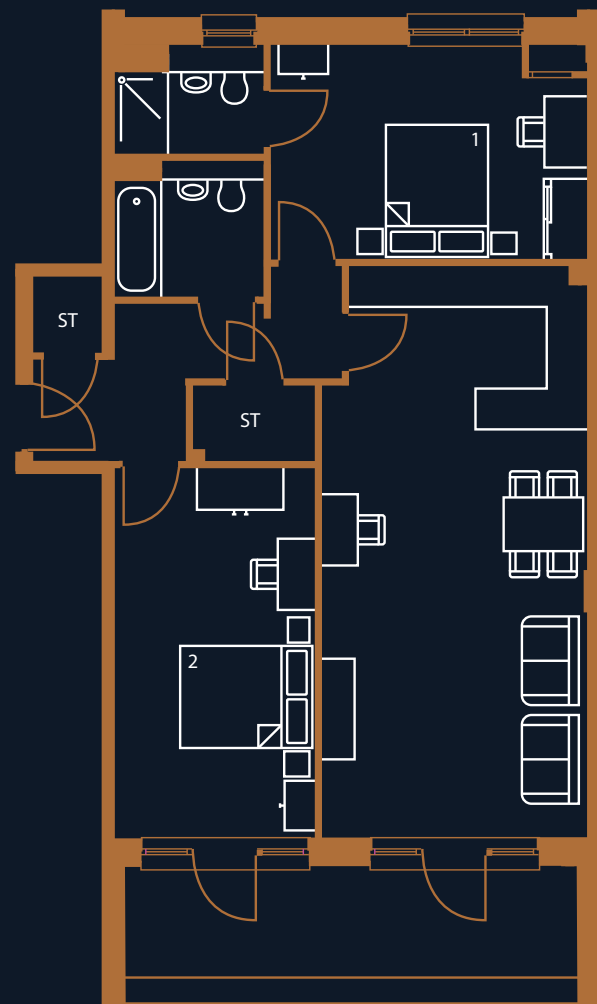
**Total:** 84.5m<sup>2</sup>

**Kitchen/Living area:** 32.2m<sup>2</sup>

**Bedroom 1:** 14.7m<sup>2</sup>

**Bedroom 2:** 16m<sup>2</sup>

**Balcony:** 11.8m<sup>2</sup>



5<sup>th</sup> floor: A5.04



4<sup>th</sup> floor: A4.04



3<sup>rd</sup> floor: A3.04



The dimensions are only approximate. Any details and layouts are subject to change. The plans are not drawn to scale. Any layouts and details shown are for guidance only and should not be relied upon for carpet sizes, appliance sizes or items of furniture. No responsibility is taken for any error, omission or misstatement. The floorplans may not include all information, as some elements have been omitted. For more information, please consult with the Sales & Marketing Team.



# PLOTS A1.05 & A2.05

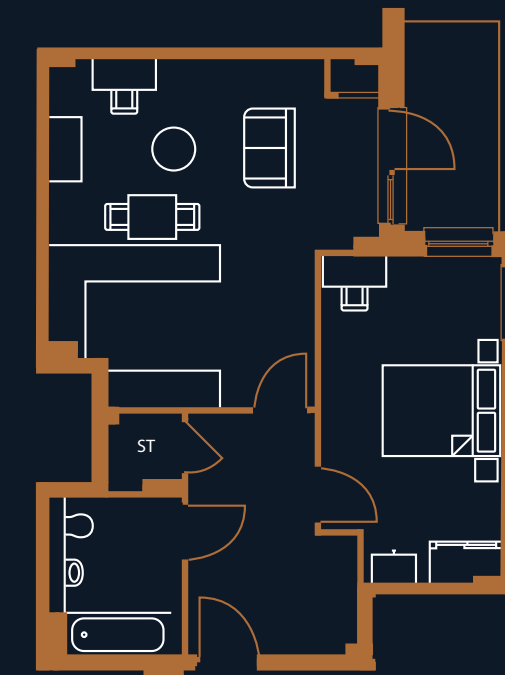
**Type:** FT20 - 1 bed apartments

**Total:** 62.2m<sup>2</sup>

**Kitchen/Living area:** 28m<sup>2</sup>

**Bedroom:** 15.6m<sup>2</sup>

**Balcony:** 5.2m<sup>2</sup>



2<sup>nd</sup> floor: A2.05



1<sup>st</sup> floor: A1.05



The dimensions are only approximate. Any details and layouts are subject to change. The plans are not drawn to scale. Any layouts and details shown are for guidance only and should not be relied upon for carpet sizes, appliance sizes or items of furniture. No responsibility is taken for any error, omission or misstatement. The floorplans may not include all information, as some elements have been omitted. For more information, please consult with the Sales & Marketing Team.



# PLOTS A3.05, A4.05, A5.05, A6.04 & A7.04

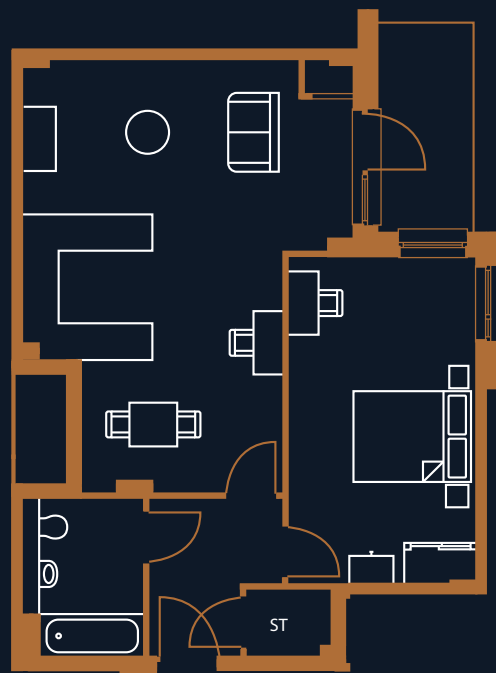
**Type:** FT08 - 1 bed apartments

**Total:** 62.2 m<sup>2</sup>

**Kitchen/Living area:** 32.3m<sup>2</sup>

**Bedroom:** 16.7 m<sup>2</sup>

**Balcony:** 5.2m<sup>2</sup>



5<sup>th</sup> floor: A5.05    6<sup>th</sup> floor: A6.04



4<sup>th</sup> floor: A4.05    7<sup>th</sup> floor: A7.04



3<sup>rd</sup> floor: A3.05



The dimensions are only approximate. Any details and layouts are subject to change. The plans are not drawn to scale. Any layouts and details shown are for guidance only and should not be relied upon for carpet sizes, appliance sizes or items of furniture. No responsibility is taken for any error, omission or misstatement. The floorplans may not include all information, as some elements have been omitted. For more information, please consult with the Sales & Marketing Team.



# PLOTS A1.06, A2.06, A3.06, A4.06 & A5.06

**Type:** FT03 - 2 bed apartments

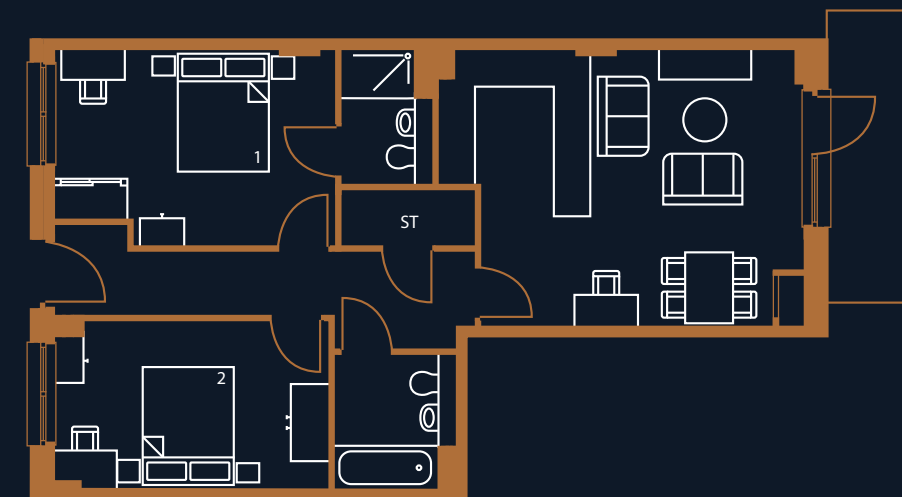
**Total:** 73.7m<sup>2</sup>

**Kitchen/Living area:** 25.6m<sup>2</sup>

**Bedroom 1:** 14.3m<sup>2</sup>

**Bedroom 2:** 12.4m<sup>2</sup>

**Balcony:** 7.2m<sup>2</sup>



3<sup>rd</sup> floor: A3.06    4<sup>th</sup> floor: A4.06



2<sup>nd</sup> floor: A2.06    5<sup>th</sup> floor: A5.06



1<sup>st</sup> floor: A1.06



The dimensions are only approximate. Any details and layouts are subject to change. The plans are not drawn to scale. Any layouts and details shown are for guidance only and should not be relied upon for carpet sizes, appliance sizes or items of furniture. No responsibility is taken for any error, omission or misstatement. The floorplans may not include all information, as some elements have been omitted. For more information, please consult with the Sales & Marketing Team.





# PLOTS A1.07, A2.07 & A3.07

**Type:** FT01 - 2 bed apartments

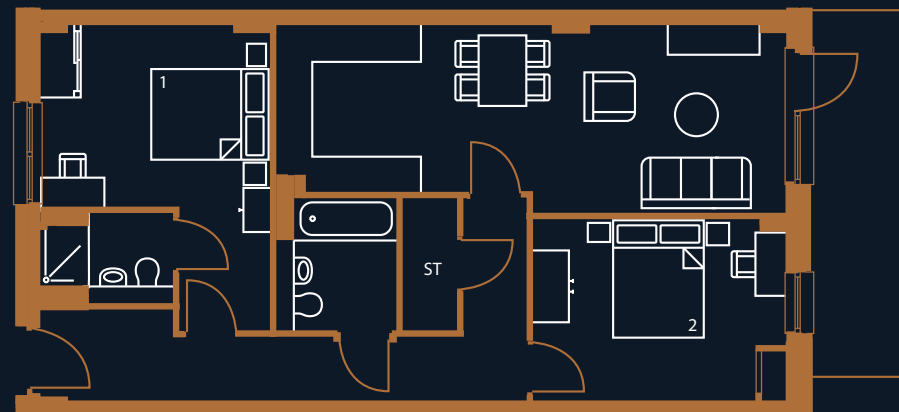
**Total:** 76.7m<sup>2</sup>

**Kitchen/Living area:** 24.8m<sup>2</sup>

**Bedroom 1:** 14.6m<sup>2</sup>

**Bedroom 2:** 12.6m<sup>2</sup>

**Balcony:** 9.1m<sup>2</sup>



3<sup>rd</sup> floor: A3.07



2<sup>nd</sup> floor: A2.07



1<sup>st</sup> floor: A1.07



The dimensions are only approximate. Any details and layouts are subject to change. The plans are not drawn to scale. Any layouts and details shown are for guidance only and should not be relied upon for carpet sizes, appliance sizes or items of furniture. No responsibility is taken for any error, omission or misstatement. The floorplans may not include all information, as some elements have been omitted. For more information, please consult with the Sales & Marketing Team.



# PLOTS A4.07 & A5.07

**Type:** FT01 - 2 bed apartments

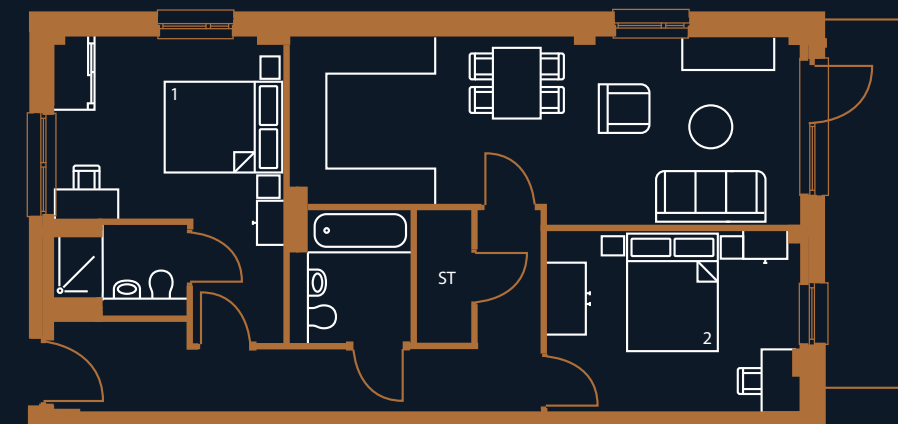
**Total:** 76.7m<sup>2</sup>

**Kitchen/Living area:** 24.8m<sup>2</sup>

**Bedroom 1:** 14.6m<sup>2</sup>

**Bedroom 2:** 12.6m<sup>2</sup>

**Balcony:** 9.1m<sup>2</sup>



5<sup>th</sup> floor: A5.07



4<sup>th</sup> floor: A4.07



The dimensions are only approximate. Any details and layouts are subject to change. The plans are not drawn to scale. Any layouts and details shown are for guidance only and should not be relied upon for carpet sizes, appliance sizes or items of furniture. No responsibility is taken for any error, omission or misstatement. The floorplans may not include all information, as some elements have been omitted. For more information, please consult with the Sales & Marketing Team.



## PLOTS A1.08, A2.08 & A3.08

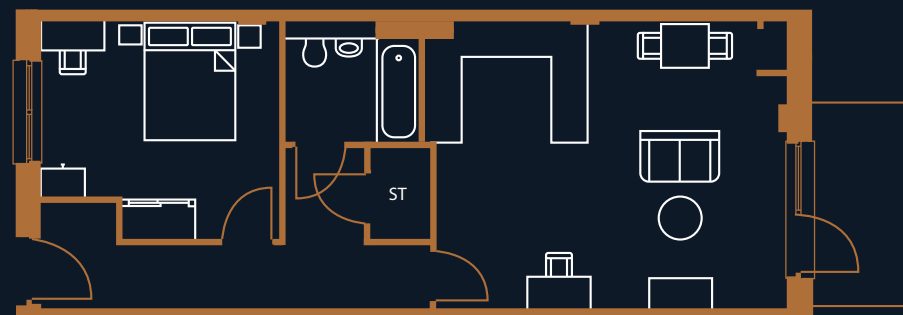
**Type:** FT02 - 1 bed apartments

**Total:** 58.7m<sup>2</sup>

**Kitchen/Living area:** 27.9m<sup>2</sup>

**Bedroom:** 13.3m<sup>2</sup>

**Balcony:** 5m<sup>2</sup>



3<sup>rd</sup> floor: A3.08



2<sup>nd</sup> floor: A2.08



1<sup>st</sup> floor: A1.08



The dimensions are only approximate. Any details and layouts are subject to change. The plans are not drawn to scale. Any layouts and details shown are for guidance only and should not be relied upon for carpet sizes, appliance sizes or items of furniture. No responsibility is taken for any error, omission or misstatement. The floorplans may not include all information, as some elements have been omitted. For more information, please consult with the Sales & Marketing Team.



## PLOTS A1.09, A2.09 & A3.09

**Type:** FT01 - 2 bed apartments

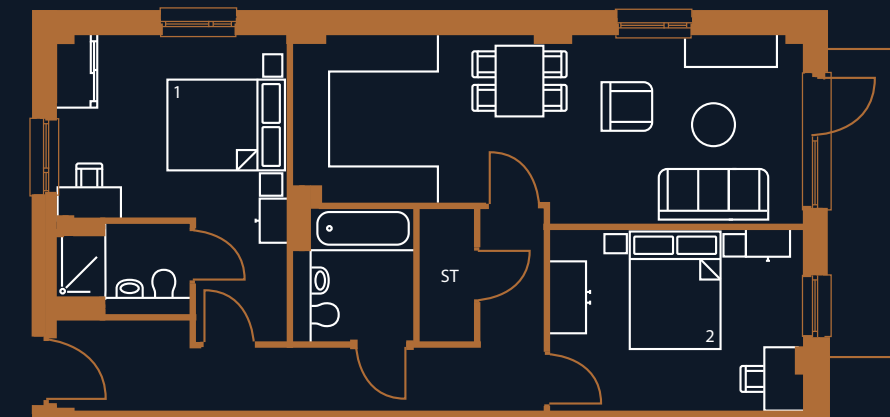
**Total:** 76.7m<sup>2</sup>

**Kitchen/Living area:** 24.8m<sup>2</sup>

**Bedroom 1:** 14.6m<sup>2</sup>

**Bedroom 2:** 12.6m<sup>2</sup>

**Balcony:** 7.6m<sup>2</sup>



3<sup>rd</sup> floor: A3.09



2<sup>nd</sup> floor: A2.09



1<sup>st</sup> floor: A1.09



The dimensions are only approximate. Any details and layouts are subject to change. The plans are not drawn to scale. Any layouts and details shown are for guidance only and should not be relied upon for carpet sizes, appliance sizes or items of furniture. No responsibility is taken for any error, omission or misstatement. The floorplans may not include all information, as some elements have been omitted. For more information, please consult with the Sales & Marketing Team.





## PLOTS B3.01, B4.01 & B5.01

**Type:** FT10 - 2 bed apartments

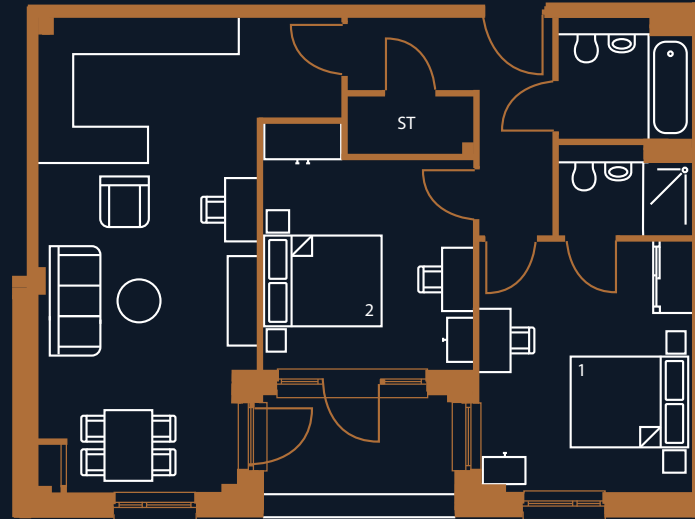
**Total:** 76.9m<sup>2</sup>

**Kitchen/Living area:** 30.2m<sup>2</sup>

**Bedroom 1:** 14.6m<sup>2</sup>

**Bedroom 2:** 12.8m<sup>2</sup>

**Balcony:** 5.6m<sup>2</sup>



5<sup>th</sup> floor: B5.01



4<sup>th</sup> floor: B4.01



3<sup>rd</sup> floor: B3.01



The dimensions are only approximate. Any details and layouts are subject to change. The plans are not drawn to scale. Any layouts and details shown are for guidance only and should not be relied upon for carpet sizes, appliance sizes or items of furniture. No responsibility is taken for any error, omission or misstatement. The floorplans may not include all information, as some elements have been omitted. For more information, please consult with the Sales & Marketing Team.



## PLOTS B3.02, B4.02 & B5.02

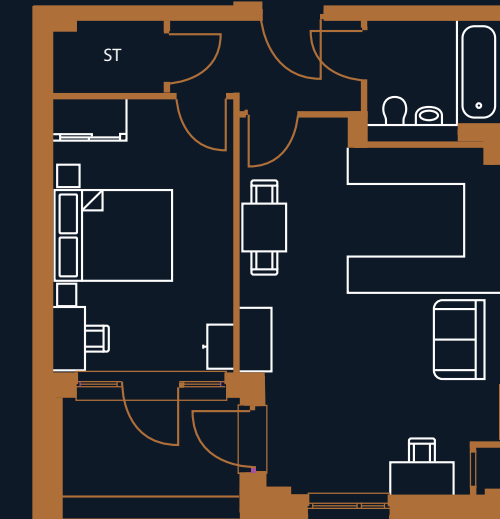
**Type:** FT12 - 1 bed apartments

**Total:** 51m<sup>2</sup>

**Kitchen/Living area:** 25m<sup>2</sup>

**Bedroom:** 13.5m<sup>2</sup>

**Balcony:** 5.2m<sup>2</sup>



5<sup>th</sup> floor: B5.02



4<sup>th</sup> floor: B4.02



3<sup>rd</sup> floor: B3.02



The dimensions are only approximate. Any details and layouts are subject to change. The plans are not drawn to scale. Any layouts and details shown are for guidance only and should not be relied upon for carpet sizes, appliance sizes or items of furniture. No responsibility is taken for any error, omission or misstatement. The floorplans may not include all information, as some elements have been omitted. For more information, please consult with the Sales & Marketing Team.



# PLOTS B3.03, B4.03 & B5.03

**Type:** FT14 - 2 bed apartments

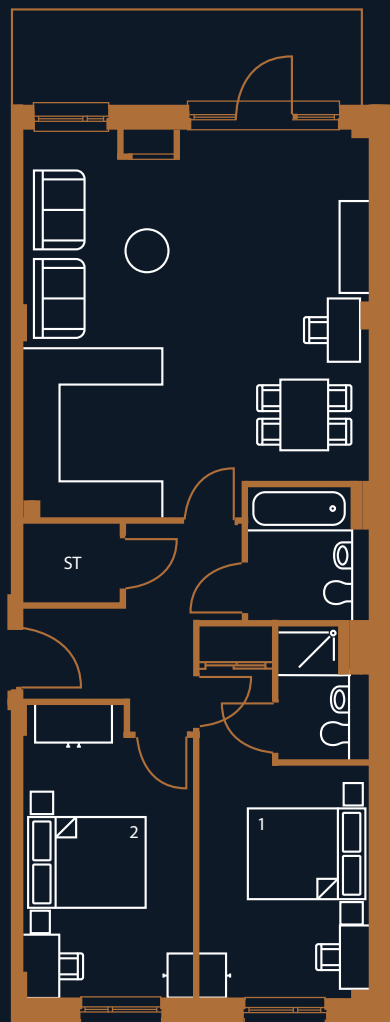
**Total:** 82m<sup>2</sup>

**Kitchen/Living area:** 35.4m<sup>2</sup>

**Bedroom 1:** 13.5m<sup>2</sup>

**Bedroom 2:** 13m<sup>2</sup>

**Balcony:** 8.7m<sup>2</sup>



5<sup>th</sup> floor: B5.03



4<sup>th</sup> floor: B4.03



3<sup>rd</sup> floor: B3.03



The dimensions are only approximate. Any details and layouts are subject to change. The plans are not drawn to scale. Any layouts and details shown are for guidance only and should not be relied upon for carpet sizes, appliance sizes or items of furniture. No responsibility is taken for any error, omission or misstatement. The floorplans may not include all information, as some elements have been omitted. For more information, please consult with the Sales & Marketing Team.



# PLOTS B3.04, B4.04 & B5.04

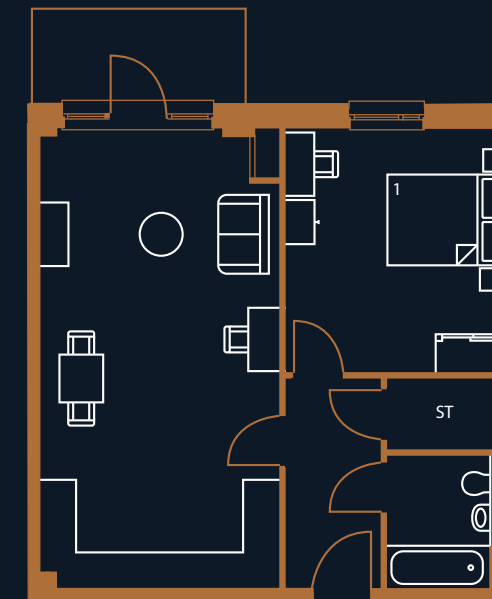
**Type:** FT15 - 1 bed apartments

**Total:** 58.9m<sup>2</sup>

**Kitchen/Living area:** 30.2m<sup>2</sup>

**Bedroom 1:** 14.8m<sup>2</sup>

**Balcony:** 5.2m<sup>2</sup>



5<sup>th</sup> floor: B5.04



4<sup>th</sup> floor: B4.04



3<sup>rd</sup> floor: B3.04



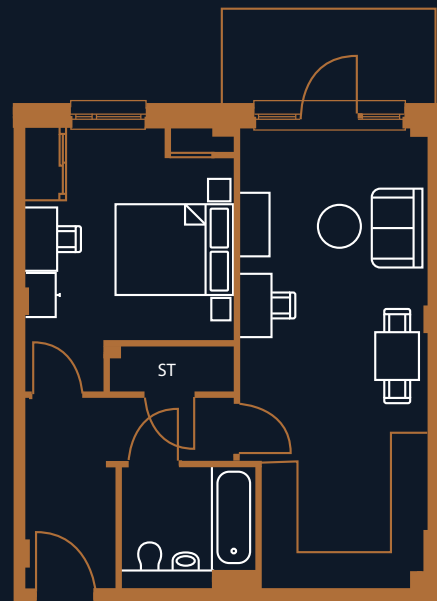
The dimensions are only approximate. Any details and layouts are subject to change. The plans are not drawn to scale. Any layouts and details shown are for guidance only and should not be relied upon for carpet sizes, appliance sizes or items of furniture. No responsibility is taken for any error, omission or misstatement. The floorplans may not include all information, as some elements have been omitted. For more information, please consult with the Sales & Marketing Team.





# PLOTS B4.05 & B5.05

- Type:** FT17 - 1 bed apartments
- Total:** 50.6m<sup>2</sup>
- Kitchen/Living area:** 22.8m<sup>2</sup>
- Bedroom 1:** 13.2m<sup>2</sup>
- Balcony:** 5.2m<sup>2</sup>



5<sup>th</sup> floor: B5.05



4<sup>th</sup> floor: B4.05

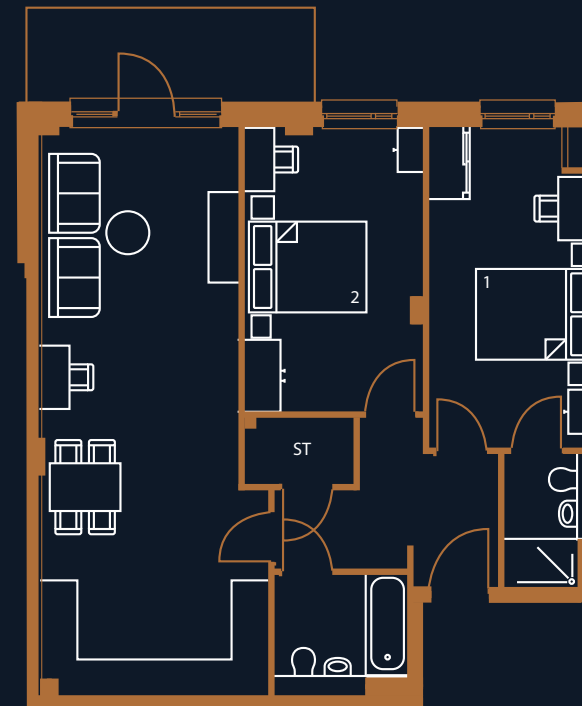


The dimensions are only approximate. Any details and layouts are subject to change. The plans are not drawn to scale. Any layouts and details shown are for guidance only and should not be relied upon for carpet sizes, appliance sizes or items of furniture. No responsibility is taken for any error, omission or misstatement. The floorplans may not include all information, as some elements have been omitted. For more information, please consult with the Sales & Marketing Team.



# PLOTS B3.06, B4.06 & B5.06

- Type:** FT18 - 2 bed apartments
- Total:** 80.6m<sup>2</sup>
- Kitchen/Living area:** 32.3m<sup>2</sup>
- Bedroom 1:** 14.6m<sup>2</sup>
- Bedroom 2:** 13.9m<sup>2</sup>
- Balcony:** 7.1m<sup>2</sup>



5<sup>th</sup> floor: B5.06



4<sup>th</sup> floor: B4.06



3<sup>rd</sup> floor: B3.06



The dimensions are only approximate. Any details and layouts are subject to change. The plans are not drawn to scale. Any layouts and details shown are for guidance only and should not be relied upon for carpet sizes, appliance sizes or items of furniture. No responsibility is taken for any error, omission or misstatement. The floorplans may not include all information, as some elements have been omitted. For more information, please consult with the Sales & Marketing Team.



# GENERAL INFO & ENQUIRIES

## About us

Paragon Asra Housing, known as PA Housing, owns more than 23,000 homes in London, Surrey and the Midlands. We specialise in providing Shared Ownership homes in London, Surrey and the Midlands.

PA Housing is committed to working together with our stakeholders to make a difference to our customers and communities. We are dedicated to finding innovative ways to involve our residents, while empowering our people to be unashamedly bold, doing whatever it takes to deliver more quality homes and services we can all be proud of.

## Contact us

[www.pahousing.co.uk/odysseysquare](http://www.pahousing.co.uk/odysseysquare)  
[odysseysquare@pahousing.co.uk](mailto:odysseysquare@pahousing.co.uk)



## Eligibility & disclaimer

Income threshold apply, speak to the Sales and Marketing Team to find out more.

The particulars within this document are for illustrative purposes and should be treated as guidance only. They cannot be relied upon as accurately describing any of the specified matters prescribed by any Order made under The Consumer Protection from Unfair Trading Regulations 2008. Nor do they constitute a contract, part of a contract, or warranty. A mortgage may be required. Service charges, rent and other costs may apply. Your home is at risk of repossession if you do not keep up repayments on a loan secured against it. Terms and conditions apply.



