



**OXSHOTT  
GREEN**



# WELCOME

An exclusive small collection  
of stylish 1 and 2-bedroom  
Shared ownership apartments





## GREEN OASIS

Discover the perfect blend of modern living and green tranquillity in sought-after Oxshott. Own a stylish 1 or 2-bed Shared Ownership apartment, nestled in a peaceful cul-de-sac and surrounded by beautiful countryside and bring your dream within reach!

The charming village of Oxshott is within easy reach of nearby Cobham and Leatherhead for all your lifestyle needs - together with excellent transport links. These cosy, contemporary apartments will appeal to singles, couples or small families seeking a balance of rural space and urban convenience.

Computer Generated imagery: The blocks are B, C & D.







## THE LOCALITY

Oxshott village has it all, an attractive high street with convenient local stores; primary schools; Oxshott Railway Station; recreation ground; thriving sports club as well as two charming local pubs, The Victoria and The Bear.

Nearby Cobham offers independent shops, excellent secondary schools, arts, entertainment and leisure opportunities. Wine and dine at the stylish Coppa Club or treat yourself to lunch at The Ivy Cobham Garden.

Walk the scenic River Mole Trail, breathe deeply at beautiful Painshill Park, or loop-the-loop at Chessington World of Adventures.





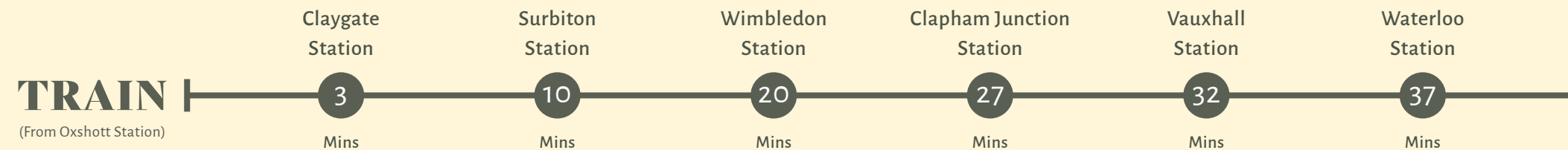
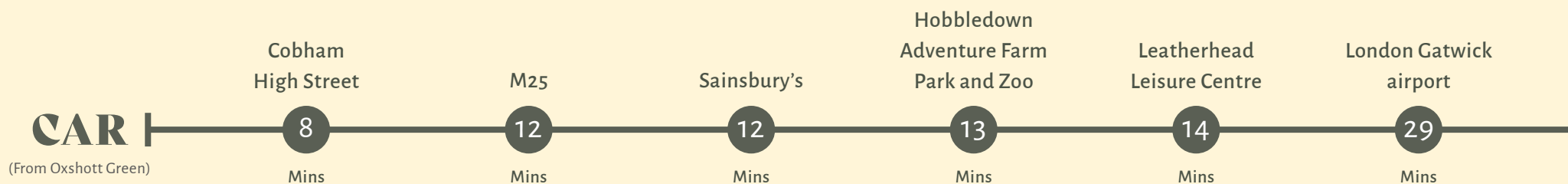
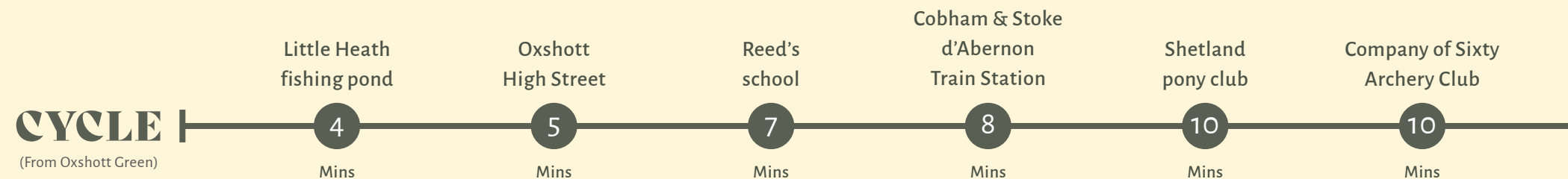
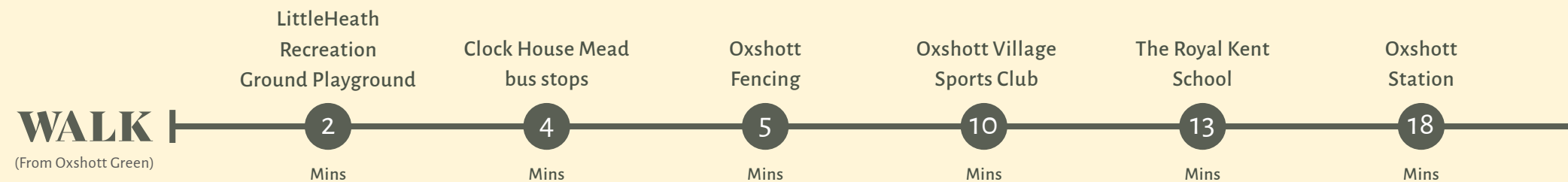


# TRANSPORT LINKS

Oxshott Green is particularly well connected! Schools and leisure activities are all easily accessible by car or bike. Shop at Kingston, roughly 7 miles away or spend the day marvelling at the Surrey Area of Outstanding Natural Beauty which is around 8 miles away.

Reach Greater London in under 20 minutes from Oxshott Train Station, Guildford in about 30 minutes and London Waterloo in under 40 minutes.

The M25 provides easy access to Heathrow and Gatwick in around 30 minutes, and links to the A3 north-east for London or south-west to Guildford and Portsmouth.



The journey times are only approximate. You can find out more about the travelling times from Transport for London and Google Maps.



## AREA NEARBY

- 1. Oxshott Heath
- 2. Knowle Hill Park
- 3. Prince's Coverts
- 4. Knotts Park



- 1. Oxshott High Street
- 2. Cobham High Street



- 1. Blundel Lane
- 2. Warren Lane
- 3. Stoke Road
- 4. M25



- 1. Oxshott train station
- 2. Cobham & Stoke d'Abernon train station



**OXSHOTT GREEN**

**OXSHOTT GREEN**

Waveryley Road, Oxshott, Leatherhead  
Lyfield, Oxshott, Leatherhead  
Webster Close, Oxshott, Leatherhead

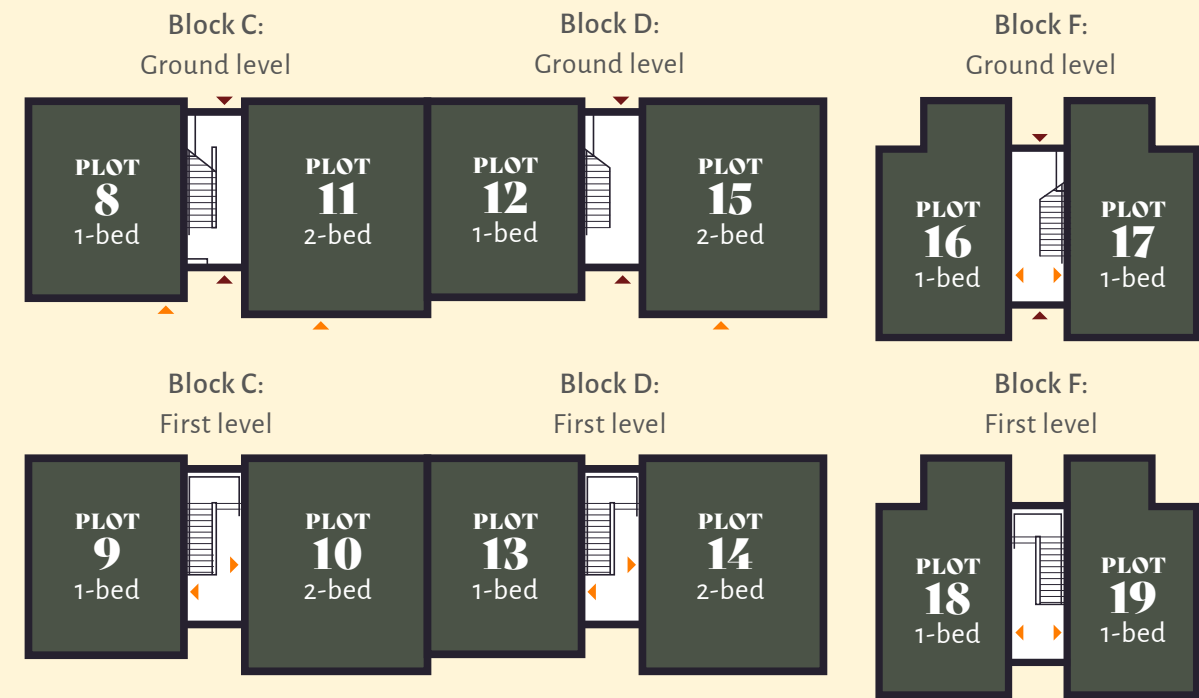
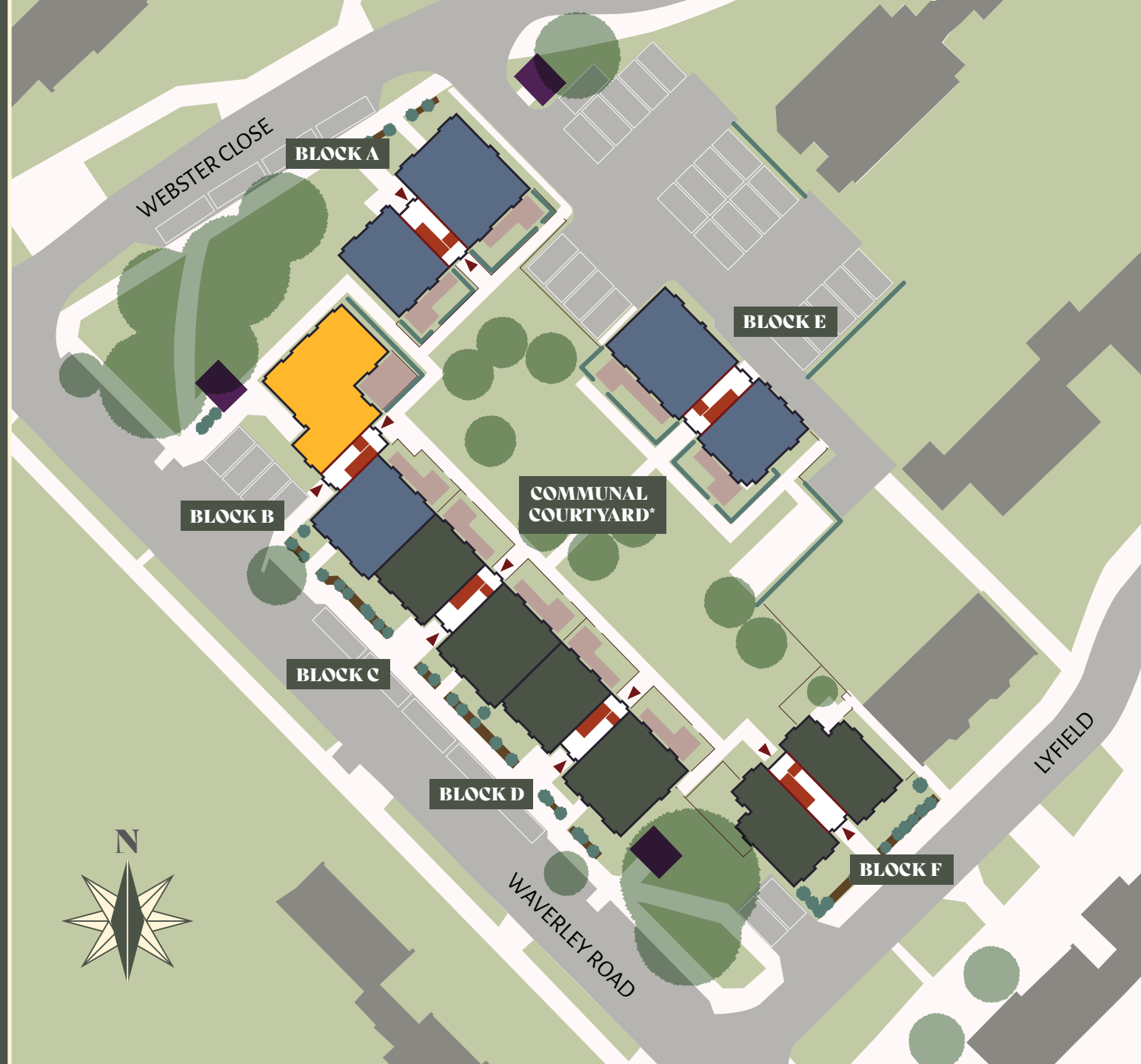


# HOME SITE OVERVIEW

Oxshott Green is a tranquil, relaxing place to call home. The eight 1-bed and four 2-bed apartments all sit within traditional 2-storey buildings which blend in seamlessly with the neighbouring properties in this prestigious development.

All the apartments enjoy the use of a lovely communal garden space and the ground floor apartments come with a private garden terrace.

The warm and welcoming Shared Ownership apartments boast an airy, bright and modern style, with contemporary design features and fittings, practical storage and an allocated parking space.



\*All residents (Shared Owners and Affordable Rent Residents) living within Oxshott Green have access to the communal courtyard.  
 \*\*Shared Owners will only have fob access to the block in which they own a property, and will not be able to access other blocks within the development. Each Shared Ownership home will have an allocated parking space. Blocks A, B & E will offer 1 & 2-bed Affordable Rented homes. The plans are not drawn to scale and any details may subject to change. The layouts and positions of the buildings depicted on the site map plan are for illustrative purposes only, and not every detail is included. Plots 8, 11, 12, 15, 16 & 17 will have private patios whereas plots 9, 10, 13, 14, 18 & 19 won't have a private patio. The compass north on the sitemap does not correspond with the north position of the plot locator above, as it has been rotated for your guidance only. For more information, please consult with the Sales and Marketing Team.

# PLOTS 8 & 12

## SUMMARY:

1-bed apartment

## LEVEL:

Ground

## BLOCK:

C: Plot 8

D: Plot 12

## TOTAL:

53m<sup>2</sup>

## KITCHEN AREA:

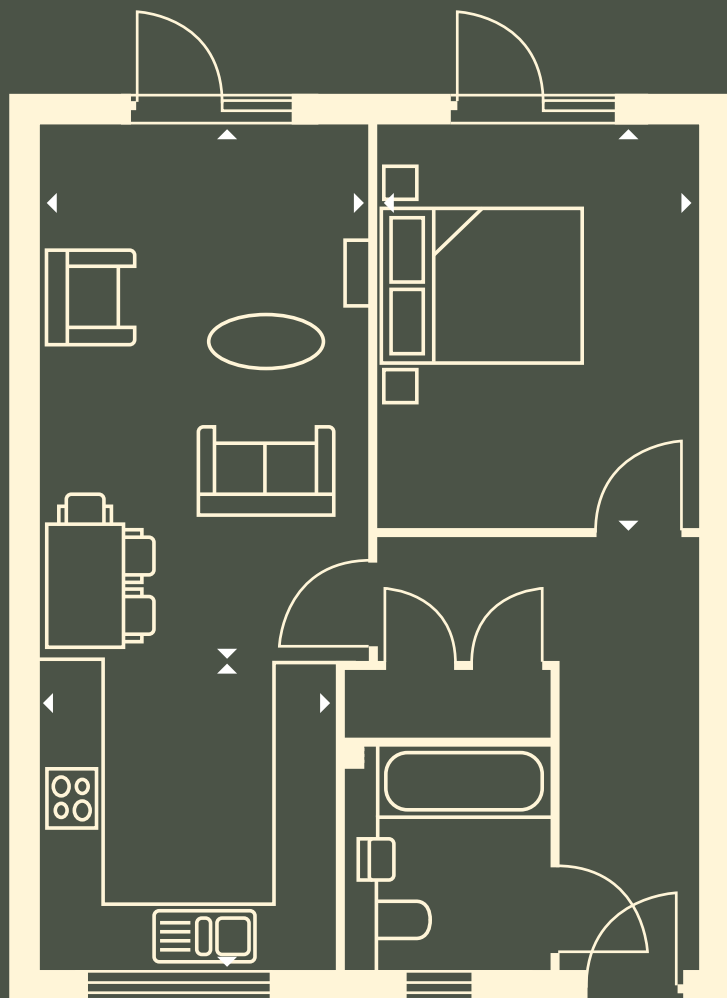
2.8 x 3.0m

## LOUNGE AREA:

3.1 x 5.2m

## BEDROOM:

3.1 x 3.9m



The plans are not drawn to scale. All floor layouts may be subject to change. The dimensions given on the plans are subject to minor variations, intended for guidance only and are not intended to be used for carpet sizes, appliance sizes or items of furniture. The compass north on the sitemap does not correspond with the north position of the floorplan, as it has been rotated for your guidance only. Please check with our Sales & Marketing Team.

# PLOTS 9 & 13

## SUMMARY:

1-bed apartment

## LEVEL:

First

## BLOCK:

C: Plot 9

D: Plot 13

## TOTAL:

53m<sup>2</sup>

## KITCHEN AREA:

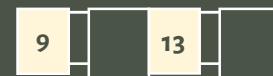
4.0 x 2.7m

## LOUNGE AREA:

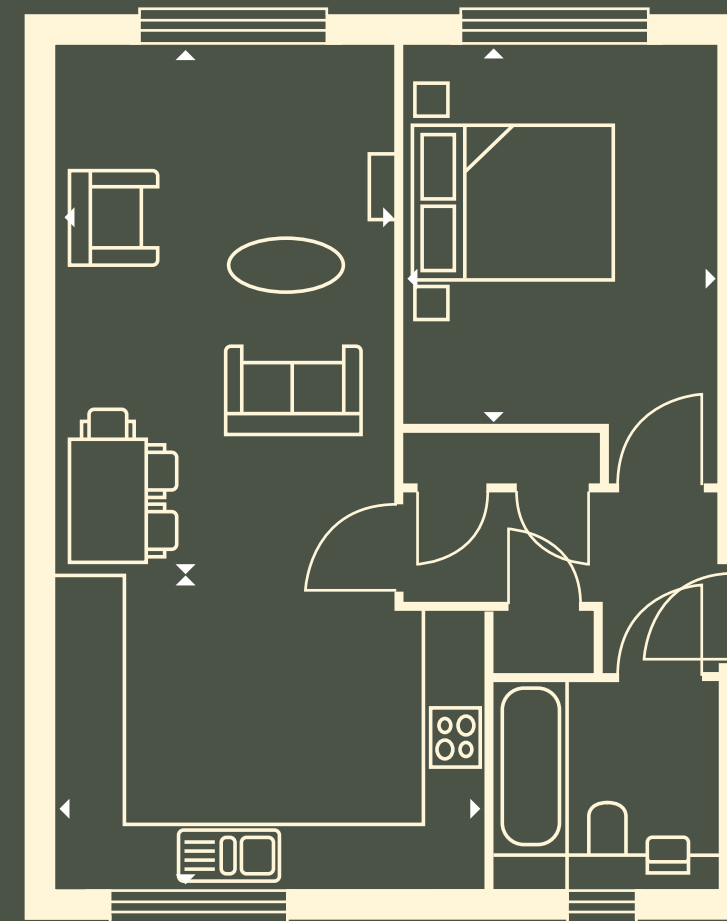
3.2 x 5.1m

## BEDROOM:

3.7 x 3m



The plans are not drawn to scale. All floor layouts may be subject to change. The dimensions given on the plans are subject to minor variations, intended for guidance only and are not intended to be used for carpet sizes, appliance sizes or items of furniture. The compass north on the sitemap does not correspond with the north position of the floorplan, as it has been rotated for your guidance only. Please check with our Sales & Marketing Team.





# PLOTS 10 & 14

## SUMMARY:

2-bed apartment

## LEVEL:

First

## BLOCK:

C: Plot 10

D: Plot 14

## TOTAL:

67m<sup>2</sup>

## KITCHEN AREA:

3.0 x 3.2m

## LOUNGE AREA:

3.7 x 5.6m

## BEDROOM 1:

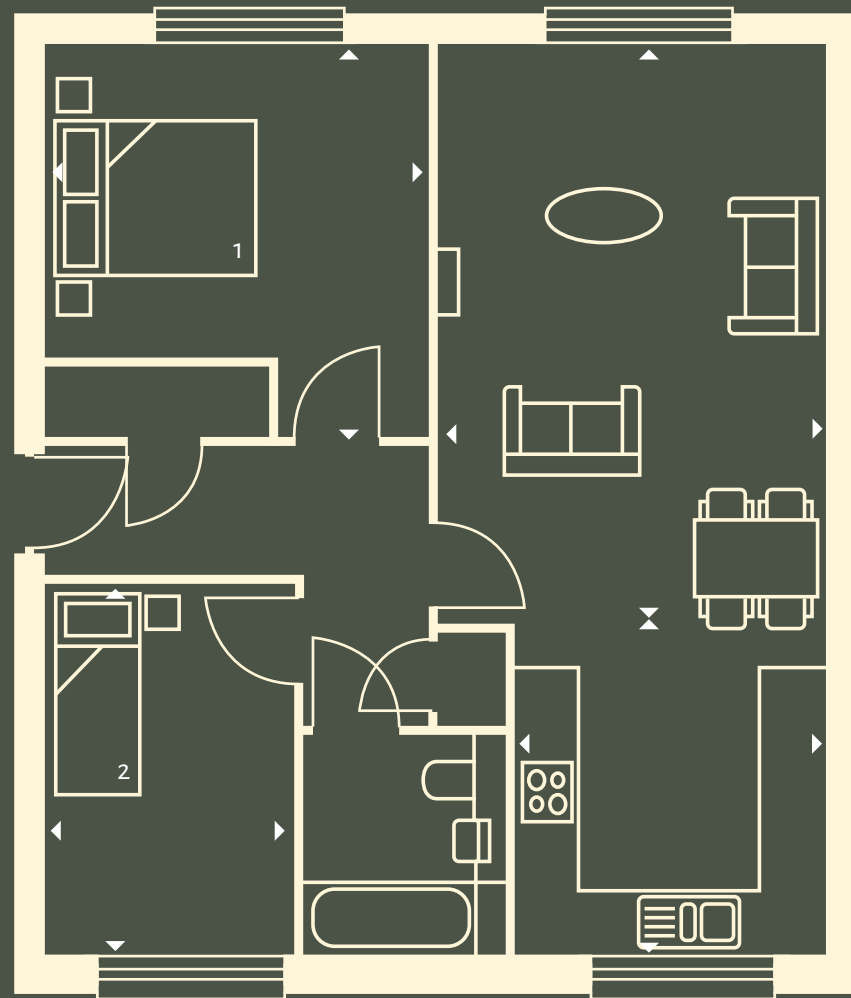
3.0 x 3.7m

## BEDROOM 2:

2.3 x 3.6m



The plans are not drawn to scale. All floor layouts may be subject to change. The dimensions given on the plans are subject to minor variations, intended for guidance only and are not intended to be used for carpet sizes, appliance sizes or items of furniture. The compass north on the sitemap does not correspond with the north position of the floorplan, as it has been rotated for your guidance only. Please check with our Sales & Marketing Team.



# PLOTS 11 & 15

## SUMMARY:

2-bed apartment

## LEVEL:

Ground

## BLOCK:

C: Plot 11

D: Plot 15

## TOTAL:

67m<sup>2</sup>

## KITCHEN AREA:

3.0 x 2.7m

## LOUNGE AREA:

3.7 x 6.0m

## BEDROOM 1:

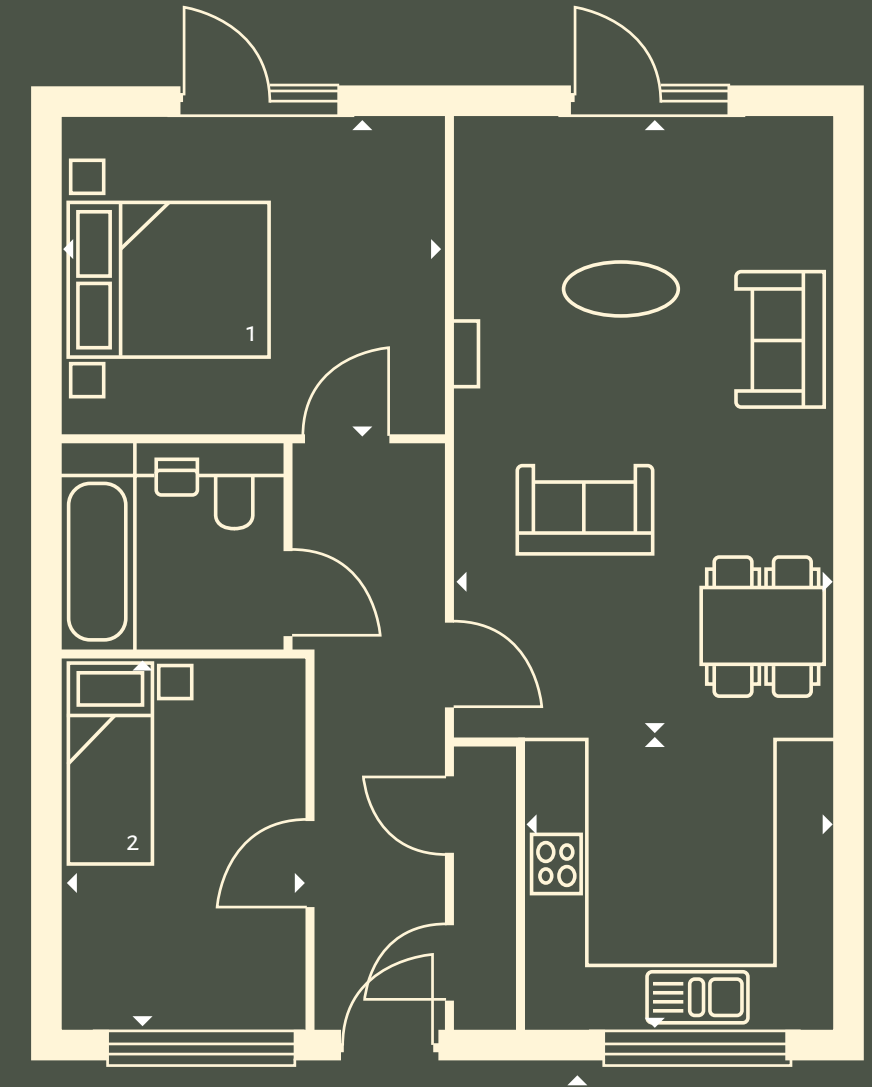
3.7 x 3.0m

## BEDROOM 2:

2.3 x 3.5m



The plans are not drawn to scale. All floor layouts may be subject to change. The dimensions given on the plans are subject to minor variations, intended for guidance only and are not intended to be used for carpet sizes, appliance sizes or items of furniture. The compass north on the sitemap does not correspond with the north position of the floorplan, as it has been rotated for your guidance only. Please check with our Sales & Marketing Team.



# PLOTS 16 & 18

## SUMMARY:

1-bed apartment

## LEVEL:

Ground: Plot 16

First: Plot 18

## BLOCK:

F

## TOTAL:

67m<sup>2</sup>

## KITCHEN AREA:

3.5 x 4.5m

## LOUNGE AREA:

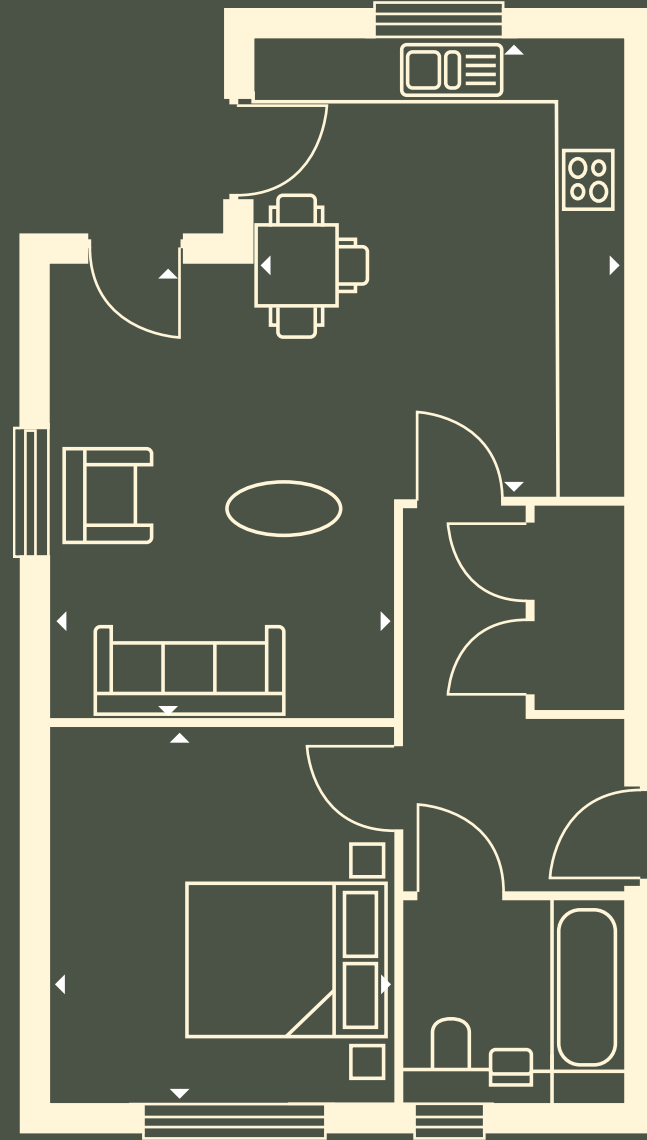
3.3 x 4.4m

## BEDROOM 1:

3.3 x 3.7m



Ground level First level



The plans are not drawn to scale. All floor layouts may be subject to change. The dimensions given on the plans are subject to minor variations, intended for guidance only and are not intended to be used for carpet sizes, appliance sizes or items of furniture. The compass north on the sitemap does not correspond with the north position of the floorplan, as it has been rotated for your guidance only. Please check with our Sales & Marketing Team.

# PLOTS 17 & 19

## SUMMARY:

1-bed apartment

## LEVEL:

Ground: Plot 17

First: Plot 19

## BLOCK:

F

## TOTAL:

54m<sup>2</sup>

## KITCHEN AREA:

3.5 x 4.5m

## LOUNGE AREA:

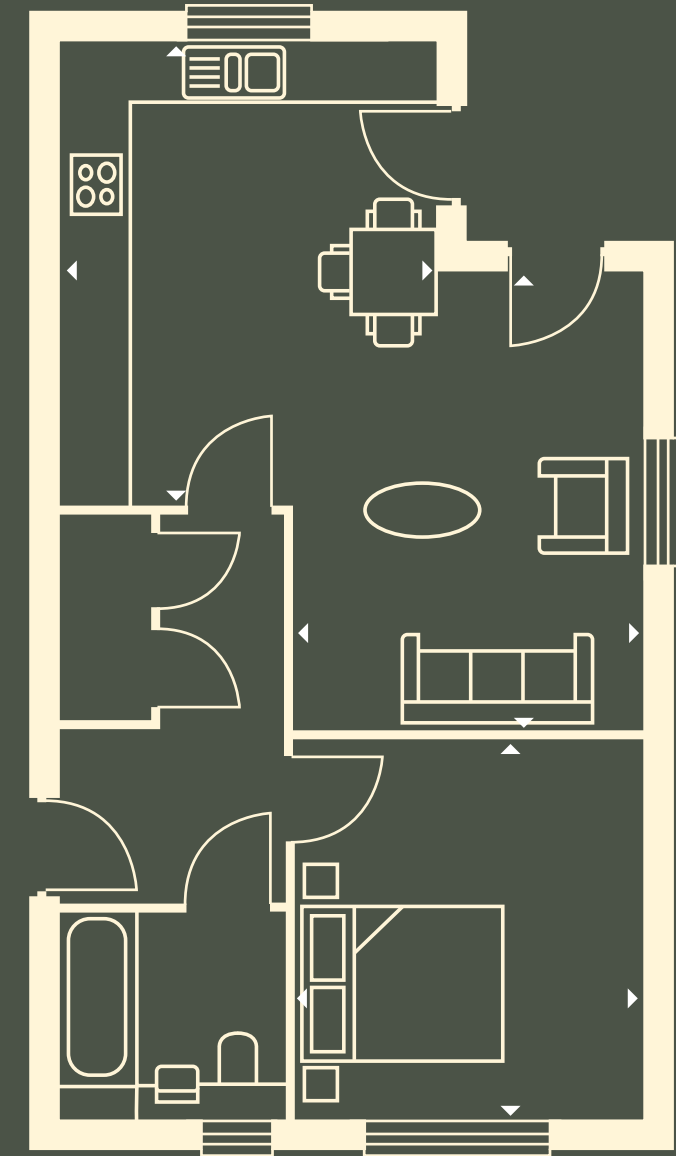
3.3 x 4.4m

## BEDROOM:

3.3 x 3.7m



Ground level First level



The plans are not drawn to scale. All floor layouts may be subject to change. The dimensions given on the plans are subject to minor variations, intended for guidance only and are not intended to be used for carpet sizes, appliance sizes or items of furniture. The compass north on the sitemap does not correspond with the north position of the floorplan, as it has been rotated for your guidance only. Please check with our Sales & Marketing Team.





# SANCTUARY SPECS

## INTERNAL

Dulux matt white painted walls  
Victoria Universal 55 White Cap Grey  
wooden flooring to the hallway,  
kitchen and dining areas.

Audio entryphone

Robus down lights

## EXTERNAL

Allocated parking space

Bike storage

Communal courtyard

Private patio  
(ground level plots only)

Internal and external specs are subject to change  
and are for illustrative purposes only. For more  
detailed information about the specifications,  
please consult with the Sales & marketing Team.



Computer Generated Imagery





# GOURMET HAVEN SPECS

## KITCHENS

Manhattan Group F Franklyn  
kitchen units

Franke Olympus tap

Handleless kitchen units

Composite quartz worktop

Integrated Zanussi single electric  
oven and fridge/freezer

Zanussi washer/dryer

Back painted glass splashback  
to cooker

Internal and external specs are subject to change  
and are for illustrative purposes only. For more  
detailed information about the specifications,  
please consult with the Sales & marketing Team.



Computer Generated Imagery





# RELAXTION SPECS

## BATHROOMS

Porcelanosa ceramic floor tiles

Porcelanosa Madagascar Blanco  
wall tiles

Ideal Standard Sandringham  
21 Range wash basin, WC and bath

Hansgrohe bath taps/shower mixer

Shower screen

Chrome heated towel rail

Internal and external specs are subject to change  
and are for illustrative purposes only. For more  
detailed information about the specifications,  
please consult with the Sales & marketing Team.



Computer Generated Imagery





## COSY NEST SPECS

### BEDROOMS

Cormar – Cloudy Bay carpets

TV point to the main bedroom only

### OTHERS

12 years warranty

Sky Q

Internal and external specs are subject to change and are for illustrative purposes only. For more detailed information about the specifications, please consult with the Sales & marketing Team.



Computer Generated Imagery





# SHARED OWNERSHIP

Shared Ownership is a Government funded, low-cost home ownership programme that aims to help people who can't afford to buy a home at full value by enabling you to buy in affordable, manageable stages. If eligible, you're able to buy a share in your property, usually between 25% and 75% and pay rent on the share you don't own. You also have to pay any service charges.

Computer Generated Imagery. The block is F.







## REGISTER TODAY

[www.pahousing.co.uk/oxshottgreen](http://www.pahousing.co.uk/oxshottgreen)  
[oxshottgreen@pahousing.co.uk](mailto:oxshottgreen@pahousing.co.uk)



Paragon Asra Housing, known as PA Housing, owns more than 23,000 homes in London, Surrey and the Midlands. We specialise in providing Shared Ownership homes in London, Surrey and the Midlands.

PA Housing is committed to working together with our stakeholders to make a difference to our customers and communities. We are dedicated to finding innovative ways to involve our residents, while empowering our people to be unashamedly bold, doing whatever it takes to deliver more quality homes and services we can all be proud of.

You must not earn more than £80K.  
Terms and conditions apply.

The particulars within this document are for illustrative purposes and should be treated as guidance only. They cannot be relied upon as accurately describing any of the specified matters prescribed by any Order made under The Consumer Protection from Unfair Trading Regulations 2008. Nor do they constitute a contract, part of a contract, or warranty. A mortgage may be required. Service charges, rent and other costs may apply. Your home is at risk of repossession if you do not keep up repayments on a loan secured against it.



