

## WEEKLY UPDATE WITH PHOTOS w/c 27<sup>th</sup> January 2025

- Mains power has now been connected to the sub-station by UKPS and power is now into the building with meters in progress and commissioning has now started and continuing up the building, the heat pumps have also been fired up and heating is progressing up the building.
- Kerbs have been installed to main carpark with remedial Tarmac completed and block paving is now complete, and the new site entrance bell mouth is in progress.
- Flooring is complete from the First to Eighth floor and carpet tiles are complete to all corridors and stair cores with the ground floor due to commence.
- Decoration is complete except for the ground floor and nursery; ground floor home decorations are in progress with three out of the five complete.
- The plant room works are complete and the Air Source Heat Pumps have been connected and powered up and in operation.
- The balcony balustrades are complete from Seventh down to First Floor with foundations to the ground floor railings and acoustic screen are now installed with ground floor railing now on site.
- Carpentry second fix is complete from the First to Eighth floor and Finals complete to the corridors, with snagging in progress. Ground now in progress.
- Kitchen installation is complete including ground floor homes.
- Tiling to kitchens and bathrooms is complete.
- The car park Block paving to zone 2 is complete and White lining is also completed with hedging and trees being installed.
- Block paving to the main carpark is now complete.
- The balcony soffits have been installed from the Seventh Floor down to the Ground Floor.



**Tony Johnson**  
Senior Site Manager

### Contact our Social Value and Community Team

☎ 0800 032 6760 (free phone) 8am to 8pm, seven days a week

✉ residents@hill.co.uk

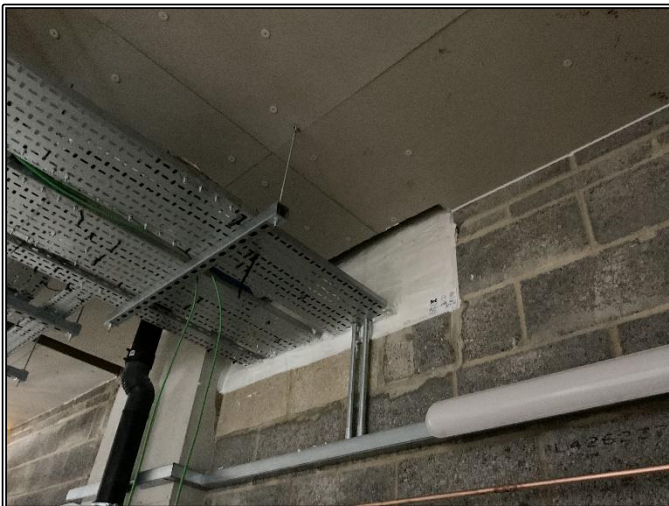
✍ The Powder House  
Gunpowder Mill  
Powdermill Lane  
Waltham Abbey  
Essex, EN9 1BN



# Thamesview House Bulletin

## 24<sup>th</sup> January 2025

- The Rainwater pipes have been installed and are connected to the ground floor outlets.
- The balcony tiling is complete including the eighth floor
- The drainage connection on Thamesmead recreation ground has been complete and signed off by Thames water. Paving is now complete
- Second Fix Drylining 1<sup>st</sup> fix & Ventilation is now complete in the Nursery and 2<sup>nd</sup> fix Drylining in progress
- The 278 street works to Felix Road is due to be started once we receive final sign off from SCC. We will try and keep disruption to a minimum and apologise for any inconvenience.
- The site will be open on Saturday morning 25/01/2025.



*GF Firestopping*



*Plot snagging*



**Tony Johnson**  
Senior Site Manager

### Contact our Social Value and Community Team

☎ 0800 032 6760 (free phone) 8am to 8pm, seven days a week

✉ residents@hill.co.uk

✍ The Powder House  
Gunpowder Mill  
Powdermill Lane  
Waltham Abbey  
Essex, EN9 1BN

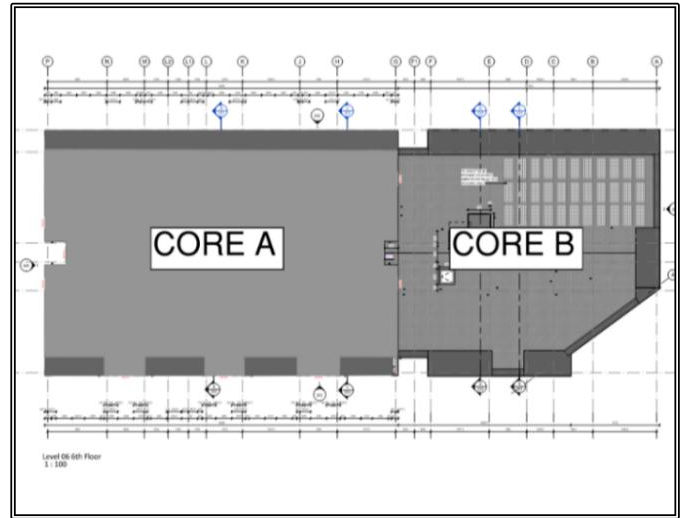


# Thamesview House Bulletin

24<sup>th</sup> January 2025



*GF Decorations*



*Core Identification*



**Tony Johnson**  
Senior Site Manager

## Contact our Social Value and Community Team

☎ 0800 032 6760 (free phone) 8am to 8pm, seven days a week

✉ residents@hill.co.uk

✍ The Powder House  
Gunpowder Mill  
Powdermill Lane  
Waltham Abbey  
Essex, EN9 1BN

