
WEEKLY UPDATE WITH PHOTOS W/C 13TH of January 2025

- Mains power has now been connected to the sub-station by UKPS and power is now into the building with meters in progress and commissioning has now started and continuing up the building, the heat pumps have also been fired up and heating is progressing up the building.
- Kerbs have been installed to main carpark with remedial Tarmac completed and block paving installed to 90% of the site with the remaining areas being worked on and due for completion next week.
- Flooring is complete from the First to Eighth floor and carpet tiles are complete to all corridors and stair cores.
- Decoration is complete except for the ground floor and nursery.
- The plant room works are complete and the Air Source Heat Pumps have been connected and powered up and in operation.
- The balcony balustrades are complete from Seventh down to First Floor with foundations to the ground floor railings and acoustic screen are now installed.
- Carpentry second fix is complete from the First to Eighth floor and Finals complete to the corridors.
- Kitchen installation is complete including ground floor plots.
- Tiling to kitchens and bathrooms is complete.
- The car park Block paving to zone 2 is complete and White lining is also completed with hedging and trees being installed with zones 1,2,3,4,5,6 now complete zone 7 to follow.
- The balcony soffits have been installed from the Seventh Floor down to the Ground Floor.
- The rainwater pipes have been installed and are connected to the ground floor outlets.



Tony Johnson
Senior Site Manager

Contact our Social Value and Community Team

☎ 0800 032 6760 (free phone) 8am to 8pm, seven days a week

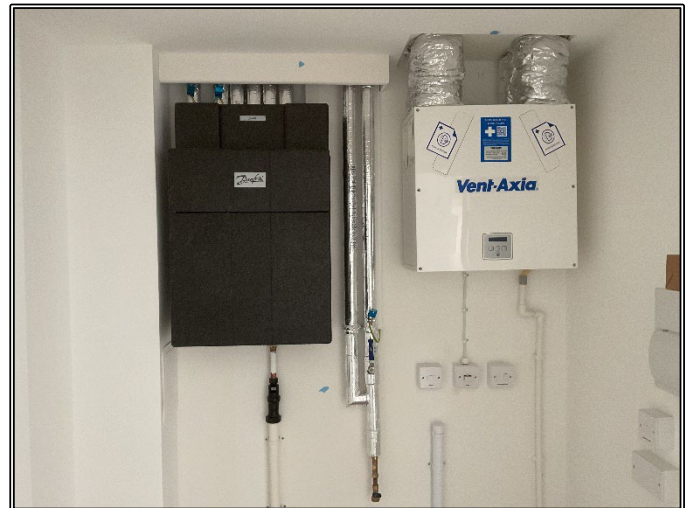
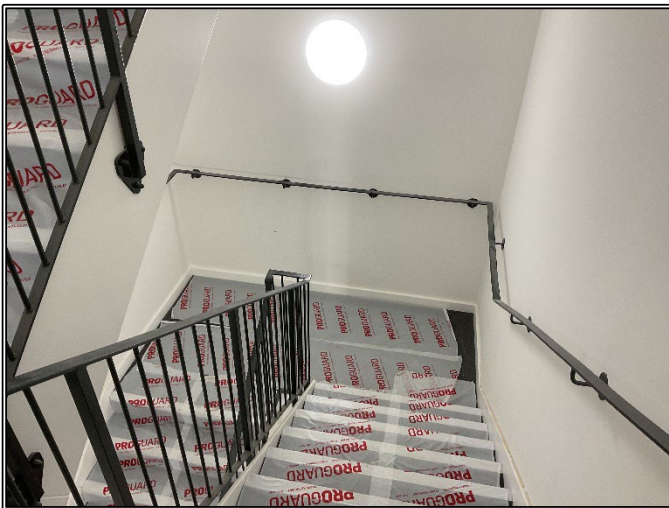
✉ residents@hill.co.uk

✍ The Powder House
Gunpowder Mill
Powdermill Lane
Waltham Abbey
Essex, EN9 1BN




amesview House Bulletin 10th January 2025


- The balcony tiling is complete including the Eighth floor
- The drainage connection on Thamesmead recreation ground has been complete and signed off by Thames Water and the hoarding has been removed and replaced herring fencing to allow paving works to progress
- Second fix drylining first fix & ventilation is now complete in the Nursery and second fix drylining in progress
- The s278 street works to Felix Road is due to be started once we receive final sign off from Surrey County Council please see below areas affected, we will try and keep disruption to a minimum and apologise for any inconvenience.
- The site will be open on Saturday morning 11/01/2025.




Tony Johnson
Senior Site Manager

Contact our Social Value and Community Team

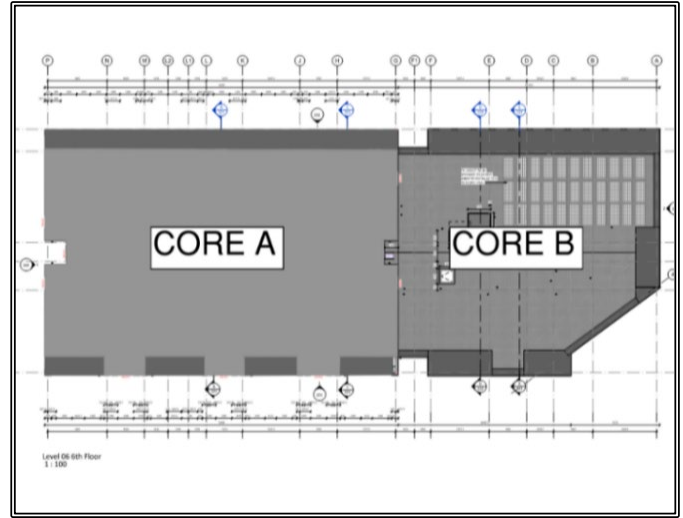
 0800 032 6760 (free phone) 8am to 8pm, seven days a week

 residents@hill.co.uk

 The Powder House
Gunpowder Mill
Powdermill Lane
Waltham Abbey
Essex, EN9 1BN





amesview House Bulletin 10th January 2025




Tony Johnson
Senior Site Manager

Contact our Social Value and Community Team

 0800 032 6760 (free phone) 8am to 8pm, seven days a week

 residents@hill.co.uk

 The Powder House
Gunpowder Mill
Powdermill Lane
Waltham Abbey
Essex, EN9 1BN

